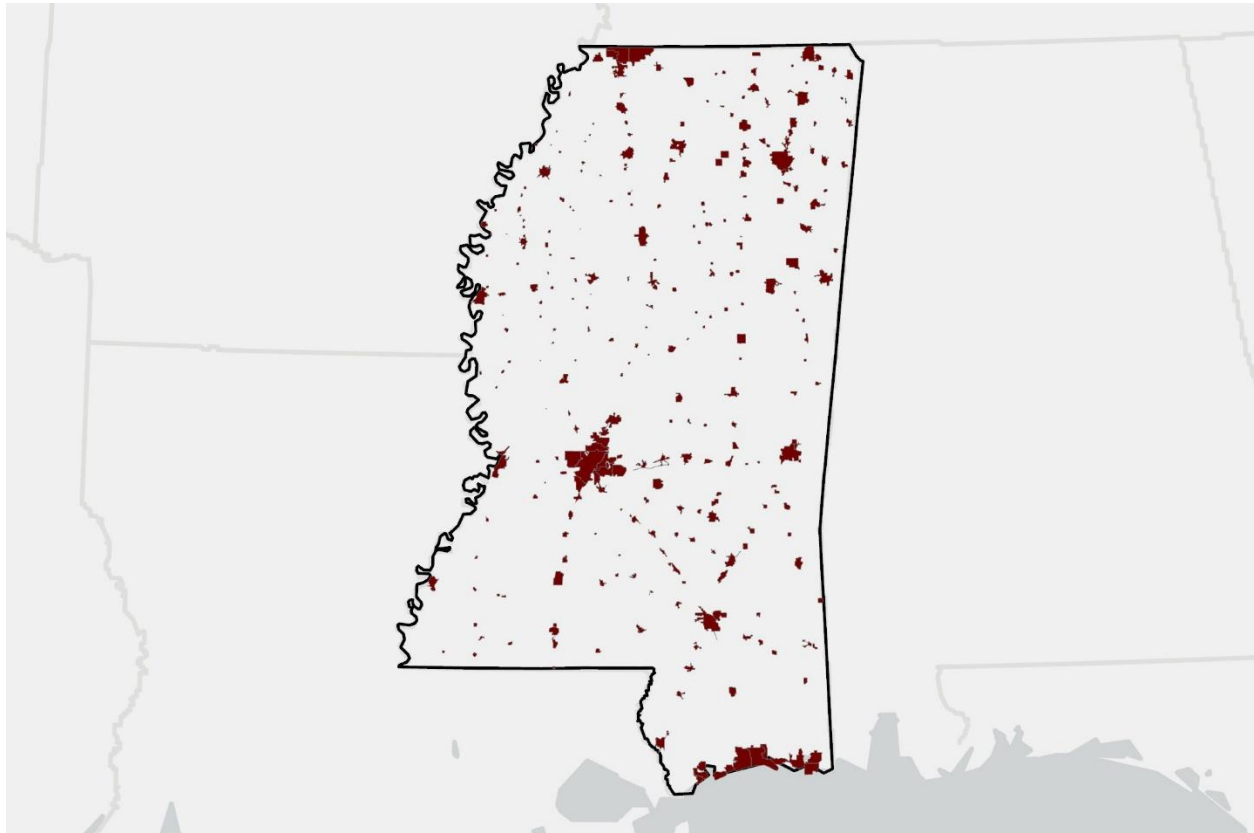


Statewide Governmental Boundaries Update

Type Shapefile



Tags governmental boundaries

Summary

This dataset provides an up-to-date representation of municipal boundaries across the State of Mississippi. The latest update ensures a standardized schema is applied uniformly across all municipalities, improving consistency and interoperability for GIS applications. The dataset is essential for urban planning, zoning, infrastructure management, and policy development.

Description

The Mississippi Statewide Governmental Boundaries Layer was developed to provide an accurate and up-to-date representation of municipal boundaries across the state. This dataset was created by gathering the most current boundary and legal descriptions for approximately 300 incorporated communities, including all cities and towns in Mississippi.

The data collection process involved compiling official municipal boundaries from various authoritative sources to ensure consistency and accuracy. This layer serves as a critical

resource for urban planning, zoning, emergency management, infrastructure development, and governmental decision-making. By maintaining a standardized schema, this dataset enhances interoperability across multiple GIS platforms and supports various municipal and regional planning efforts.

Credits

There are no credits for this item.

Use limitations

There are no access and use limitations for this item.

Extent

West -91.42924 East -88.171915

North 34.996069 South 30.258508

Scale Range

Maximum (zoomed in) 1:5,000

Minimum (zoomed out) 1:150,000,000

[Topics and Keywords ►](#)

Themes or categories of the resource Boundaries

Content type ⇔ Downloadable Data

Export to FGDC CSDGM XML format as Resource Description No

[Citation ►](#)

Title Statewide Governmental Boundaries Update

Publication date 2025-01-01 00:00:00

Presentation formats ⇔ digital map

[Citation Contacts ▶](#)

Responsible party - point of contact

Individual's name Stephen Champlin

Organization's name Mississippi Department of Environmental Quality

[Contact information ▶](#)

Phone

Voice (601) 961-5506

Address

Type postal

Delivery point P.O. Box 2279

City Jackson

Administrative area MS

Postal code 39225

Country US

e-mail address schamplin@mdeq.ms.gov

Responsible party - originator

Individual's name Stephen Champlin

Organization's name MDEQ

[Resource Details ▶](#)

Dataset languages ⇔ English (UNITED STATES)

Dataset character set utf8 - 8 bit UCS Transfer Format

Status completed

Spatial representation type ⇔ vector

Processing environment ⇔ Microsoft Windows 10 Version 10.0 (Build 26200) ; Esri
ArcGIS 13.5.2.57366

ArcGIS item properties

Name ⇔ MS_CityBoundaries_2024

Size ⇔ 0.000

Location

⇔ file:///\\STEVENWPC\F\$\DATA\00_BOUNDARIES\Governmental_Boundaries_Cities_W
O 24-8\MS_CityBoundaries_2024.shp

Access protocol ⇔ Local Area Network

[Extents](#) ►

Extent

Description

Data gathered throughout year of 2024.

Geographic extent

Bounding rectangle

Extent type

Extent used for searching

West longitude -91.42924

East longitude -88.171915

North latitude 34.996069

South latitude 30.258508

Extent contains the resource Yes

Temporal extent

Beginning date 2024-01-01 00:00:00

Ending date 2024-12-31 00:00:00

[Resource Points of Contact ►](#)

Point of contact - point of contact

Individual's name Stephen Champlin

Organization's name Mississippi Department of Environmental Quality

[Contact information ►](#)

Phone

Voice (601) 961-5506

Address

Type postal

Delivery point P.O. Box 2279

City Jackson

Administrative area MS

Postal code 39225

Country US

e-mail address schamplin@mdeq.ms.gov

[Resource Maintenance ►](#)

Resource maintenance

Update frequency not planned

[Spatial Reference ►](#)

ArcGIS coordinate system

Type ⇔ Projected

Geographic coordinate reference ⇔ GCS_North_American_1983

Projection ⇔ NAD_1983_Mississippi_TM

Coordinate reference details ⇔

ProjectedCoordinateSystem

WKID 102609

XOrigin -5122200

YOrigin -12297100

XYScale 450339697.45066422

ZOrigin -100000

ZScale 10000

MOrigin -100000

MScale 10000

XYTolerance 0.001

ZTolerance 0.001

MTolerance 0.001

HighPrecision true

LatestWKID 3814

WKT

PROJCS["NAD_1983_Mississippi_TM",GEOGCS["GCS_North_American_1983",DATUM["D_North_American_1983",SPHEROID["GRS_1980",6378137.0,298.257222101]],PRIMEM["Greenwich",0.0],UNIT["Degree",0.0174532925199433]],PROJECTION["Transverse_Mercator"],PARAMETER["False_Easting",500000.0],PARAMETER["False_Northing",1300000.0],PARAMETER["Central_Meridian",-89.75],PARAMETER["Scale_Factor",0.9998335],PARAMETER["Latitude_Of_Origin",32.5],UNIT["Meter",1.0],AUTHORITY["EPSG",3814]]

Reference system identifier

Value ⇔ 3814

Codespace ⇔ EPSG

Version ⇔ 6.17.1(10.0.0)

[Spatial Data Properties ►](#)

[Vector ►](#)

Level of topology for this dataset ⇔ geometry only

Geometric objects

Feature class name MS_CityBoundaries_2024

Object type ⇔ composite

Object count ⇔ 0

[ArcGIS Feature Class Properties ►](#)

Feature class name MS_CityBoundaries_2024

Feature type ⇔ Simple

Geometry type ⇔ Polygon

Has topology ⇔ FALSE

Feature count ⇔ 0

Spatial index ⇔ FALSE

Linear referencing ⇔ TRUE

[Geoprocessing history ►](#)

Process

Date 2025-08-08 10:20:38

Tool location c:\program files\arcgis\pro\Resources\ArcToolbox\toolboxes\Data Management Tools.tbx\CalculateGeometryAttributes

Command issued

```
CalculateGeometryAttributes MS_GovernmentalBoundaries_Statewide "Area_Acres AREA"  
# ACRES_US  
PROJCS["NAD_1983_Mississippi_TM",GEOGCS["GCS_North_American_1983",DATUM["D_  
North_American_1983",SPHEROID["GRS_1980",6378137.0,298.257222101]],PRIMEM["Gre  
enwich",0.0],UNIT["Degree",0.0174532925199433]],PROJECTION["Transverse_Mercator"],P  
ARAMETER["False_Easting",500000.0],PARAMETER["False_Northing",1300000.0],PARAMET  
ER["Central_Meridian",-  
89.75],PARAMETER["Scale_Factor",0.9998335],PARAMETER["Latitude_Of_Origin",32.5],UNI  
T["Meter",1.0]] SAME_AS_INPUT
```

Include in lineage when exporting metadata No

Process

Date 2025-08-08 10:21:56

Tool location c:\program files\arcgis\pro\Resources\ArcToolbox\toolboxes\Data
Management Tools.tbx\CalculateGeometryAttributes

Command issued

```
CalculateGeometryAttributes MS_GovernmentalBoundaries_Statewide "Area_SqMiles  
AREA" # SQUARE_MILES_US  
PROJCS["NAD_1983_Mississippi_TM",GEOGCS["GCS_North_American_1983",DATUM["D_  
North_American_1983",SPHEROID["GRS_1980",6378137.0,298.257222101]],PRIMEM["Gre  
enwich",0.0],UNIT["Degree",0.0174532925199433]],PROJECTION["Transverse_Mercator"],P  
ARAMETER["False_Easting",500000.0],PARAMETER["False_Northing",1300000.0],PARAMET  
ER["Central_Meridian",-  
89.75],PARAMETER["Scale_Factor",0.9998335],PARAMETER["Latitude_Of_Origin",32.5],UNI  
T["Meter",1.0]] SAME_AS_INPUT
```

Include in lineage when exporting metadata No

Process

Date 2026-04-22 15:06:57

Tool location c:\program files\arcgis\pro\Resources\ArcToolbox\toolboxes\Conversion
Tools.tbx\ExportFeatures

Command issued

```
ExportFeatures "F:\DATA\00_BOUNDARIES\Governmental_Boundaries_Cities_WO 24-
8\Statewide\MDEM_GovernmentalBoundariesUpdated_Statewide.gdb\MS_Governmental
Boundaries_Statewide" "F:\DATA\00_BOUNDARIES\Governmental_Boundaries_Cities_WO
24-8\MS_CityBoundaries_2024.shp" # NOT_USE_ALIAS "Name "Name" true true false 255
Text 0 0,First,#,F:\DATA\00_BOUNDARIES\Governmental_Boundaries_Cities_WO 24-
8\Statewide\MDEM_GovernmentalBoundariesUpdated_Statewide.gdb\MS_Governmental
Boundaries_Statewide,Name,0,254;County "County" true true false 255 Text 0
0,First,#,F:\DATA\00_BOUNDARIES\Governmental_Boundaries_Cities_WO 24-
8\Statewide\MDEM_GovernmentalBoundariesUpdated_Statewide.gdb\MS_Governmental
Boundaries_Statewide,County,0,254;Population "Population" true true false 4 Long 0
0,First,#,F:\DATA\00_BOUNDARIES\Governmental_Boundaries_Cities_WO 24-
8\Statewide\MDEM_GovernmentalBoundariesUpdated_Statewide.gdb\MS_Governmental
Boundaries_Statewide,Population,-1,-1;Classification "Classification" true true false 255
Text 0 0,First,#,F:\DATA\00_BOUNDARIES\Governmental_Boundaries_Cities_WO 24-
8\Statewide\MDEM_GovernmentalBoundariesUpdated_Statewide.gdb\MS_Governmental
Boundaries_Statewide,Classification,0,254;Year_Incorporated "Year_Incorporated" true
true false 2 Short 0
0,First,#,F:\DATA\00_BOUNDARIES\Governmental_Boundaries_Cities_WO 24-
8\Statewide\MDEM_GovernmentalBoundariesUpdated_Statewide.gdb\MS_Governmental
Boundaries_Statewide,Year_Incorporated,-1,-1;Boundary_Updated "Boundary_Updated"
true true false 2 Short 0
0,First,#,F:\DATA\00_BOUNDARIES\Governmental_Boundaries_Cities_WO 24-
8\Statewide\MDEM_GovernmentalBoundariesUpdated_Statewide.gdb\MS_Governmental
Boundaries_Statewide,Boundary_Updated,-1,-1;Update_Type "Update_Type" true true
false 255 Text 0 0,First,#,F:\DATA\00_BOUNDARIES\Governmental_Boundaries_Cities_WO
24-
8\Statewide\MDEM_GovernmentalBoundariesUpdated_Statewide.gdb\MS_Governmental
Boundaries_Statewide,Update_Type,0,254;UpdatedDataSource "UpdatedDataSource"
true true false 255 Text 0
0,First,#,F:\DATA\00_BOUNDARIES\Governmental_Boundaries_Cities_WO 24-
8\Statewide\MDEM_GovernmentalBoundariesUpdated_Statewide.gdb\MS_Governmental
Boundaries_Statewide,UpdatedDataSource,0,254;PDD "PDD" true true false 255 Text 0
0,First,#,F:\DATA\00_BOUNDARIES\Governmental_Boundaries_Cities_WO 24-
8\Statewide\MDEM_GovernmentalBoundariesUpdated_Statewide.gdb\MS_Governmental
Boundaries_Statewide,PDD,0,254;PlaceFP "PlaceFP" true true false 4 Long 0
0,First,#,F:\DATA\00_BOUNDARIES\Governmental_Boundaries_Cities_WO 24-
```

8\Statewide\MDEM_GovernmentalBoundariesUpdated_Statewide.gdb\MS_Governmental
 Boundaries_Statewide,PlaceFP,-1,-1;PlaceNS "PlaceNS" true true false 4 Long 0
 0,First,#,F:\DATA\00_BOUNDARIES\Governmental_Boundaries_Cities_WO 24-
 8\Statewide\MDEM_GovernmentalBoundariesUpdated_Statewide.gdb\MS_Governmental
 Boundaries_Statewide,PlaceNS,-1,-1;ClassFP "ClassFP" true true false 255 Text 0
 0,First,#,F:\DATA\00_BOUNDARIES\Governmental_Boundaries_Cities_WO 24-
 8\Statewide\MDEM_GovernmentalBoundariesUpdated_Statewide.gdb\MS_Governmental
 Boundaries_Statewide,ClassFP,0,254;FUNCSTAT "FUNCSTAT" true true false 255 Text 0
 0,First,#,F:\DATA\00_BOUNDARIES\Governmental_Boundaries_Cities_WO 24-
 8\Statewide\MDEM_GovernmentalBoundariesUpdated_Statewide.gdb\MS_Governmental
 Boundaries_Statewide,FUNCSTAT,0,254;Area_Acres "Area_Acres" true true false 8 Double
 0 0,First,#,F:\DATA\00_BOUNDARIES\Governmental_Boundaries_Cities_WO 24-
 8\Statewide\MDEM_GovernmentalBoundariesUpdated_Statewide.gdb\MS_Governmental
 Boundaries_Statewide,Area_Acres,-1,-1;Area_SqMiles "Area_SqMiles" true true false 8
 Double 0 0,First,#,F:\DATA\00_BOUNDARIES\Governmental_Boundaries_Cities_WO 24-
 8\Statewide\MDEM_GovernmentalBoundariesUpdated_Statewide.gdb\MS_Governmental
 Boundaries_Statewide,Area_SqMiles,-1,-1;Documents "Documents" true true false 500
 Text 0 0,First,#,F:\DATA\00_BOUNDARIES\Governmental_Boundaries_Cities_WO 24-
 8\Statewide\MDEM_GovernmentalBoundariesUpdated_Statewide.gdb\MS_Governmental
 Boundaries_Statewide,Documents,0,499;Shape_Length "Shape_Length" false true true 8
 Double 0 0,First,#,F:\DATA\00_BOUNDARIES\Governmental_Boundaries_Cities_WO 24-
 8\Statewide\MDEM_GovernmentalBoundariesUpdated_Statewide.gdb\MS_Governmental
 Boundaries_Statewide,Shape_Length,-1,-1;Shape_Area "Shape_Area" false true true 8
 Double 0 0,First,#,F:\DATA\00_BOUNDARIES\Governmental_Boundaries_Cities_WO 24-
 8\Statewide\MDEM_GovernmentalBoundariesUpdated_Statewide.gdb\MS_Governmental
 Boundaries_Statewide,Shape_Area,-1,-1" #

Include in lineage when exporting metadata No

[Distribution](#) ►

Distribution format

Name ⇔ Shapefile

Transfer options

Transfer size ⇔ 0.000

[Fields ▶](#)

[Details for object MS_CityBoundaries_2024 ▶](#)

Type ⇔ Feature Class

Row count ⇔ 0

Definition

N/A

Definition source

N/A

[Field FID ▶](#)

Alias ⇔ FID

Data type ⇔ OID

Width ⇔ 4

Precision ⇔ 0

Scale ⇔ 0

Field description ⇔

Internal feature number.

Description source ⇔

Esri

Description of values ⇔

Sequential unique whole numbers that are automatically generated.

[Field Shape ▶](#)

Alias ⇔ Shape

Data type ⇔ Geometry

Width ⇔ 0

Precision ⇔ 0

Scale ⇔ 0

Field description ⇔

Feature geometry.

Description source ⇔

Esri

Description of values ⇔

Coordinates defining the features.

[Field Name ▶](#)

Alias ⇔ Name

Data type ⇔ String

Width ⇔ 254

Precision ⇔ 0

Scale ⇔ 0

Field description

Municipality Name

Description source

N/A

[Field County](#) ►

Alias ⇔ County

Data type ⇔ String

Width ⇔ 254

Precision ⇔ 0

Scale ⇔ 0

Field description

County municipality falls in

Description source

N/A

[Field Population](#) ►

Alias ⇔ Population

Data type ⇔ Integer

Width ⇔ 10

Precision ⇔ 10

Scale ⇔ 0

Field description

Population of municipality based off most recent US Census

Description source

U.S. Census Bureau

[Field Classifica ►](#)

Alias ⇔ Classifica

Data type ⇔ String

Width ⇔ 254

Precision ⇔ 0

Scale ⇔ 0

[Field Year_Incor ►](#)

Alias ⇔ Year_Incor

Data type ⇔ Integer

Width ⇔ 5

Precision ⇔ 5

Scale ⇔ 0

[Field Boundary_U ►](#)

Alias ⇔ Boundary_U

Data type ⇔ Integer

Width ⇔ 5

Precision ⇔ 5

Scale ⇔ 0

[Field Update_Typ ►](#)

Alias ⇔ Update_Typ

Data type ⇔ String

Width ⇔ 254

Precision ⇔ 0

Scale ⇔ 0

[Field UpdatedDat ►](#)

Alias ⇔ UpdatedDat

Data type ⇔ String

Width ⇔ 254

Precision ⇔ 0

Scale ⇔ 0

[Field PDD ►](#)

Alias ⇔ PDD

Data type ⇔ String

Width ⇔ 254

Precision ⇔ 0

Scale ⇔ 0

Field description

Planning and Development District municipality falls within.

Description source

Mississippi Planning and Development Districts

[Field PlaceFP ▶](#)

Alias ⇔ PlaceFP

Data type ⇔ Integer

Width ⇔ 10

Precision ⇔ 10

Scale ⇔ 0

Field description

Place FIPS Codes

Description source

U.S. Census Bureau

[Field PlaceNS ▶](#)

Alias ⇔ PlaceNS

Data type ⇔ Integer

Width ⇔ 10

Precision ⇔ 10

Scale ⇔ 0

Field description

Place NS Code

Description source

U.S. Census Bureau

[Field ClassFP ▶](#)

Alias ⇔ ClassFP

Data type ⇔ String

Width ⇔ 254

Precision ⇔ 0

Scale ⇔ 0

Field description

FIPS Class Code

Description source

U.S. Census Bureau

[Field FUNCSTAT ▶](#)

Alias ⇔ FUNCSTAT

Data type ⇔ String

Width ⇔ 254

Precision ⇔ 0

Scale ⇔ 0

Field description

Functional Status Codes

Description source

U.S. Census Bureau

[Field Area Acres ►](#)

Alias Area Acres

Data type ⇔ Double

Width ⇔ 19

Precision ⇔ 0

Scale ⇔ 0

Field description

Area of municipality in acres

Description source

Calculate Geometry

[Field Area SqMil ►](#)

Alias ⇔ Area_SqMil

Data type ⇔ Double

Width ⇔ 19

Precision ⇔ 0

Scale ⇔ 0

[Field Documents ►](#)

Alias ⇔ Documents

Data type ⇔ String

Width ⇔ 254

Precision ⇔ 0

Scale ⇔ 0

Field description

Hyperlink to documents folder for municipality

Description source

N/A

[Field Shape_Leng ►](#)

Alias ⇔ Shape_Leng

Data type ⇔ Double

Width ⇔ 19

Precision ⇔ 0

Scale ⇔ 0

[Field Shape_Area ►](#)

Alias ⇔ Shape_Area

Data type ⇔ Double

Width ⇔ 19

Precision ⇔ 0

Scale ⇔ 0

Field description ⇔

Area of feature in internal units squared.

Description source ⇔

Esri

Description of values ⇔

Positive real numbers that are automatically generated.

[Metadata Details ▶](#)

Metadata language ⇔ English (UNITED STATES)

Metadata character set utf8 - 8 bit UCS Transfer Format

Scope of the data described by the metadata ⇔ dataset

Scope name ⇔ dataset

Last update ⇔ 2026-04-22

ArcGIS metadata properties

Metadata format ArcGIS 1.0

Standard or profile used to edit metadata FGDC

Created in ArcGIS for the item 2024-12-16 16:25:38

Last modified in ArcGIS for the item 2026-04-22 15:06:56

Automatic updates

Have been performed Yes

Last update 2026-04-22 15:06:56

[Metadata Contacts ▶](#)

Metadata contact - point of contact

Individual's name Stephen Champlin

Organization's name Mississippi Department of Environmental Quality

[Contact information ►](#)

Phone

Voice (601) 961-5506

Address

Type postal

Delivery point P.O. Box 2279

City Jackson

Administrative area MS

Postal code 39225

Country US

e-mail address schamplin@mdeq.ms.gov

[Metadata Maintenance ►](#)

Maintenance

Update frequency unknown

Maintenance contact - point of contact

Individual's name Stephen Champlin

Organization's name Mississippi Department of Environmental Quality

[Contact information ►](#)

Phone

Voice (601) 961-5506

Address

Type postal

Delivery point P.O. Box 2279

City Jackson

Administrative area MS

Postal code 39225

Country US

e-mail address schamplin@mdeq.ms.gov

[Thumbnail and Enclosures ►](#)

Thumbnail

Thumbnail type

Image file