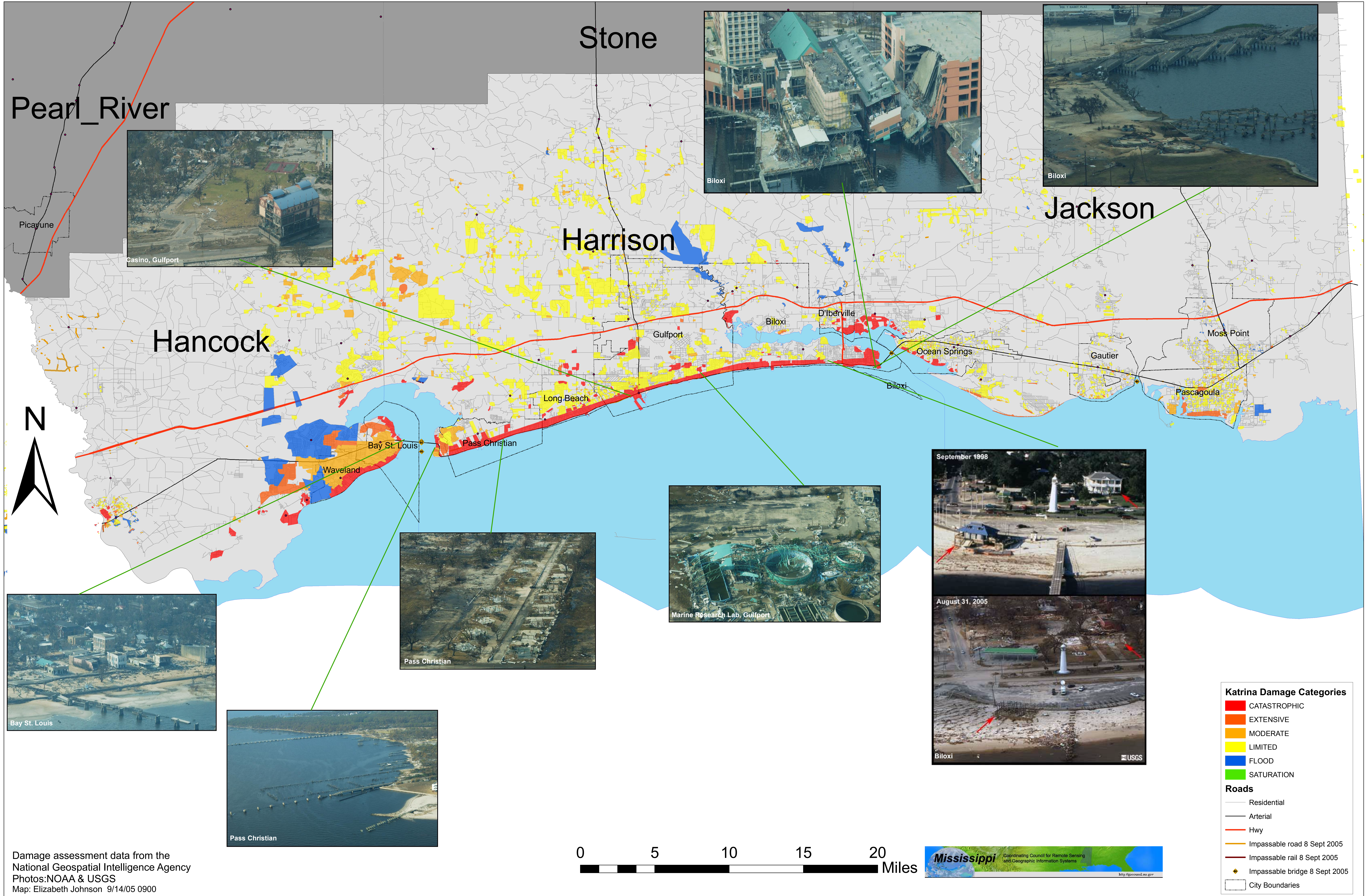
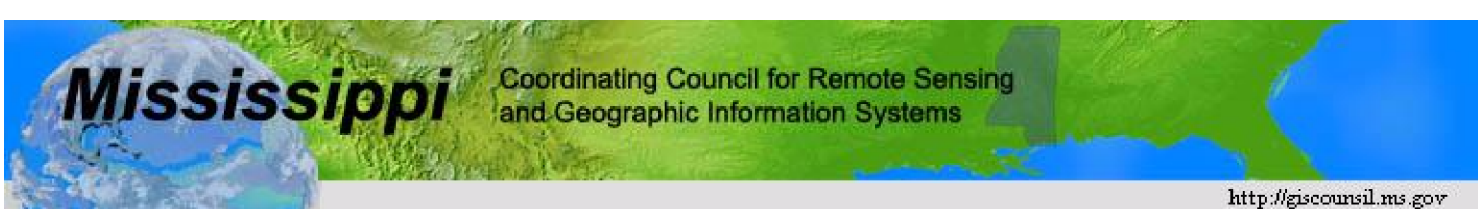
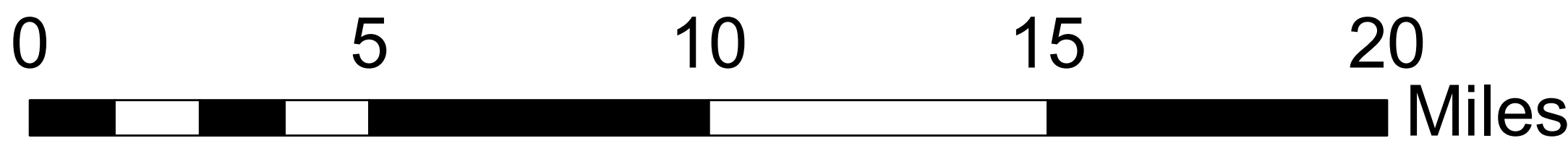


Damage Assessments September 10, 2005 1800



Damage assessment data from the National Geospatial Intelligence Agency
Photos: NOAA & USGS
Map: Elizabeth Johnson 9/14/05 0900



- Katrina Damage Categories**
- CATASTROPHIC
 - EXTENSIVE
 - MODERATE
 - LIMITED
 - FLOOD
 - SATURATION
- Roads**
- Residential
 - Arterial
 - Hwy
 - Impassable road 8 Sept 2005
 - Impassable rail 8 Sept 2005
 - ◆ Impassable bridge 8 Sept 2005
 - City Boundaries