

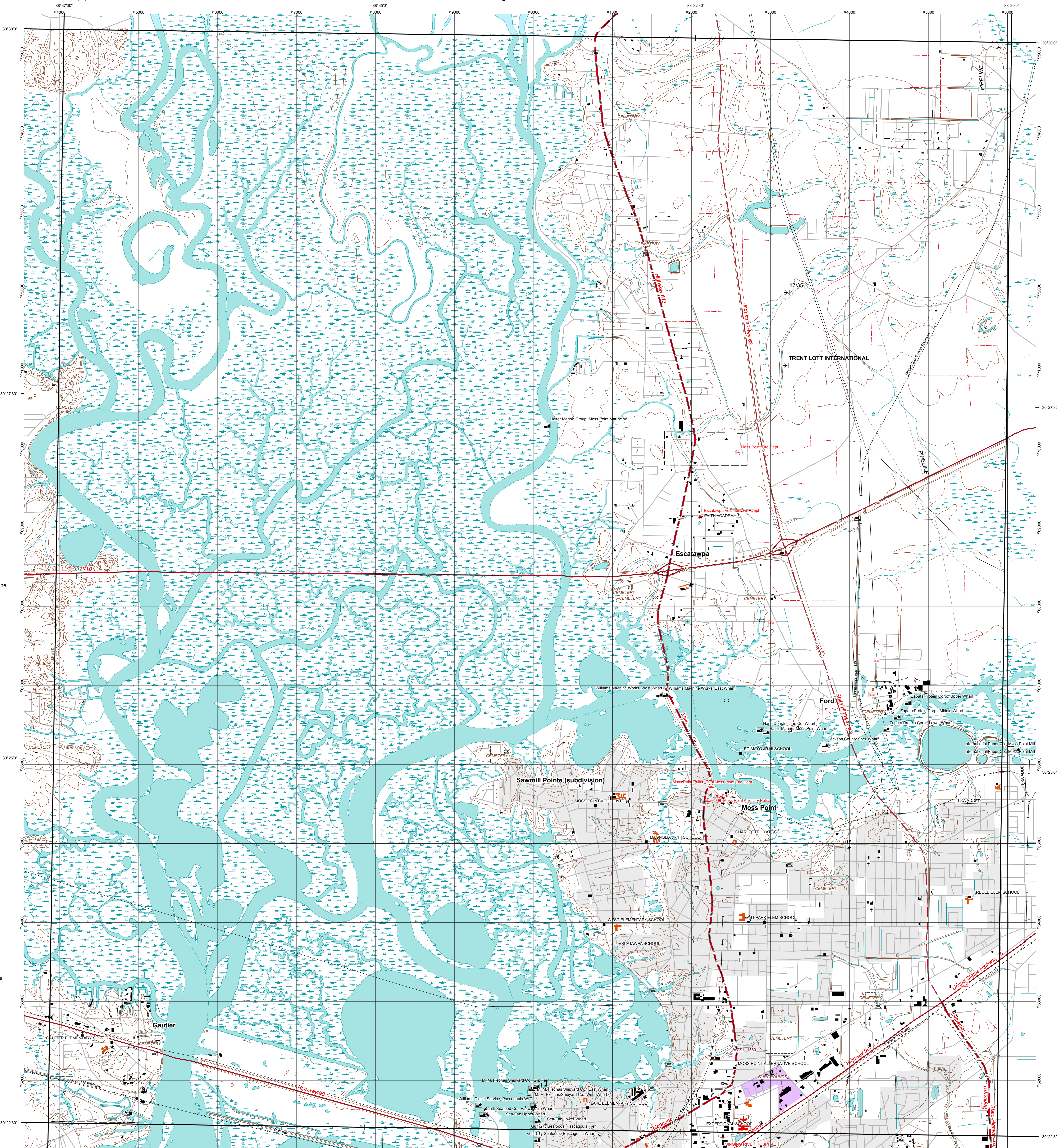
- HAZUS
- Pumps
- Hospitals
- Levees
- Airport
- Bus
- Ferry
- Port
- Rail
- Runway
- Railway
- Communication
- Electric Power
- Natural Gas
- Oil
- Potable Water
- Waste Water
- Dams
- Hazmat
- Care Facility
- Emergency Center
- Fire Station
- Police Station
- School
- USGS DLG24K MT Point
- Misc. Transportation
- End of Line
- Helipoint
- Airport
- Measuring Station
- Pump Station
- Steel Pole
- Substation
- USGS DLG24K MS Point
- Manmade Structures
- Boat Ramp
- Building
- Campground
- Drive-in
- House of Worship
- Lake/Pond
- Sunken Wreck
- Mine Shaft
- Picnic Area
- Post Office
- Public Event Site
- Quarry/Open Pit Mine
- Ruins/Cemetery
- School
- Tank
- Tower
- Well
- Pumps
- Hospitals
- USGS DLG24K MT Line
- Misc. Transportation
- Aerial Tramway
- Airport Facility
- Hydro Electric
- Measuring Station
- Pipeline
- Power Station
- Transmission Line
- Pump Station
- Seaplane Area
- Substation
- Telephone Line
- USGS DLG24K MS Line
- Manmade Structures
- Drag Strip
- Drive-in Theater
- Fence Line
- Levee
- Manmade Shoreline
- Breakwater
- Spoil Bank
- Levees
- USGS DLG24K MS
- Manmade Structures
- Boat Ramp
- Breakwater
- Urban Area
- Large Facility
- Cemetery
- Church
- Church Complex
- Public Facility
- Large Building
- Hazard Area
- Hospital
- Hospital Complex
- Intricate Surface
- Levee
- School
- School Campus
- Tank
- Town/Village
- Water Works



U.S. DEPARTMENT OF THE INTERIOR
U.S. GEOLOGICAL SURVEY



PASCAGOULA NORTH, MS
Topographic Map Prototype

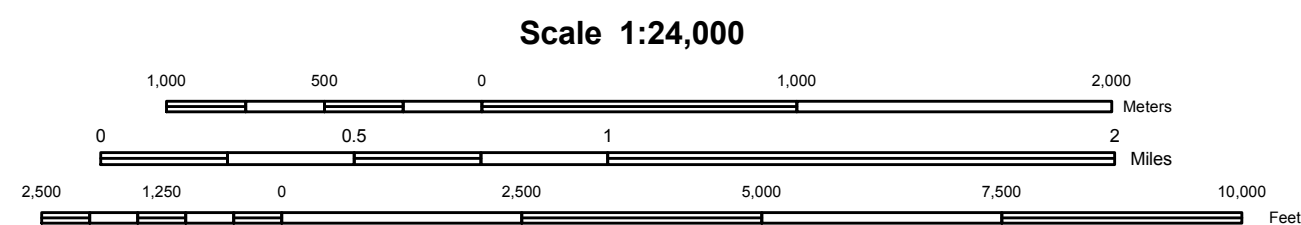


Produced by USGS Product Generation Application
E-mail: usgsmap@usgs.gov

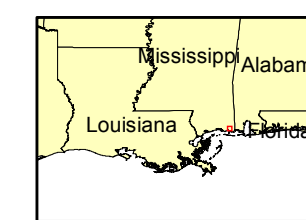
Display projection: Universal Transverse Mercator, Zone 16 North
1000 Meter UTM Grid, Zone 16 North, NAD83

No cartographic or geographic edits were performed on this data

Data - Source
HAZUS - FEMA
Hydrography - USGS 1:24,000 Scale Digital Line Graph
Hypsography - USGS 1:24,000 Scale Digital Line Graph
Transportation - Department of Census
Misc. Transportation - USGS 1:24,000 Scale Digital Line Graph
Manmade Structures - USGS 1:24,000 Scale Digital Line Graph
Labels - Geographic Names Information System



Scale 1:24,000
Contour Units Feet
To convert feet to meters, multiply by 0.3048



Map Location

Vancleave	Three Rivers	Big Point
Gautier North	Pascagoula North	Kreole
Gautier South	Pascagoula South	Grand Bay SW

USGS Quadrangle Index

- Road Legend
- Primary Route
 - Primary Route Separated
 - Secondary Route
 - Secondary Route Separated
 - Local Street
 - Driveway or Service Road
 - Ferry Crossing

Pascagoula North, MS

September 15, 2005
5:30 PM CST

Public Data Version
Prototype Product - Not For Sale