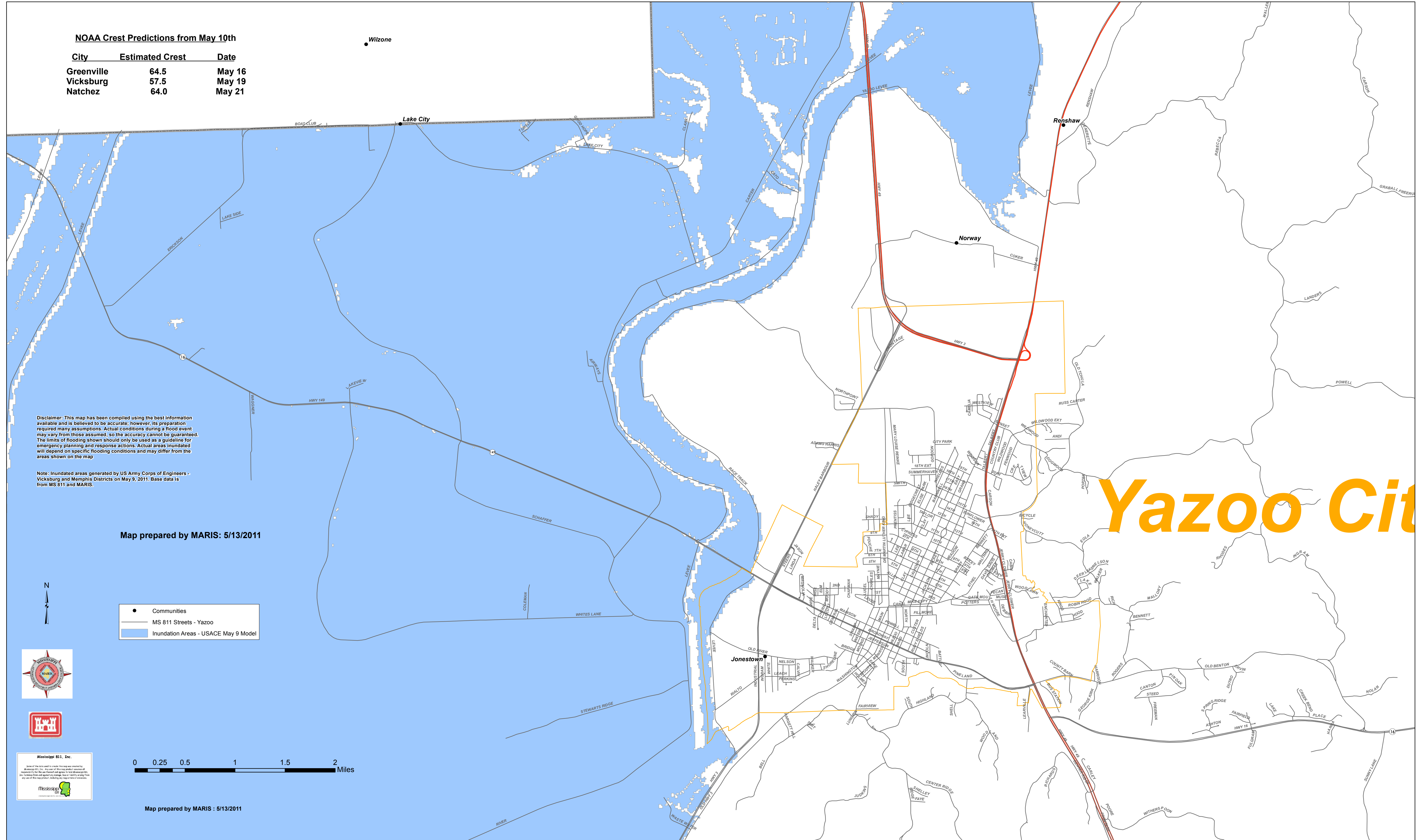


MS River Flood

May 9, 2011 Maximum Inundation Areas - Yazoo City

NOAA Crest Predictions from May 10th

City	Estimated Crest	Date
Greenville	64.5	May 16
Vicksburg	57.5	May 19
Natchez	64.0	May 21

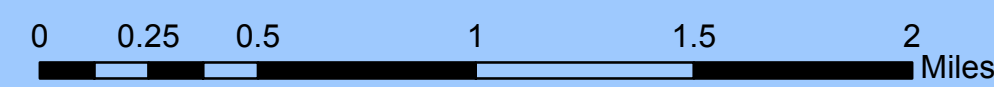
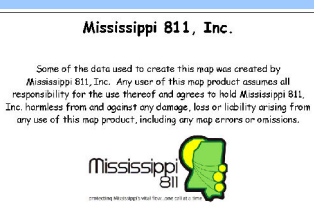


Disclaimer: This map has been compiled using the best information available and is believed to be accurate; however, its preparation required many assumptions. Actual conditions during a flood event may vary from those assumed, so the accuracy cannot be guaranteed. The limits of flooding shown should only be used as a guideline for emergency planning and response actions. Actual areas inundated will depend on specific flooding conditions and may differ from the areas shown on the map.

Note: Inundated areas generated by US Army Corps of Engineers - Vicksburg and Memphis Districts on May 9, 2011. Base data is from MS 811 and MARIS.

Map prepared by MARIS: 5/13/2011

- Communities
- MS 811 Streets - Yazoo
- Inundation Areas - USACE May 9 Model



Map prepared by MARIS : 5/13/2011