

Classified Point Cloud

Deliverable 1 Summary

✓ General		
Folder:	F:\MS_East\point_cloud\tilecls	
Total # of Files:	1,791	(All Valid)
Total File Size:	699.7 GB	(751,264,839,315 bytes)

✓ Tile Sizes		
Median Tile Size:	5,000' x 5,000'	
Minimum Tile Size:	3,249' x 3,045'	
Maximum Tile Size:	5,000' x 5,000'	
X Range:	725000.00' to 1030000.00'	
Y Range:	510000.00' to 705000.00'	
Elevation Range:	-768.37' to 2715.00'	

✓ LAS Version And Point Record Formats		
v1.4, Point Record Format 6	1,791 of 1,791 Tiles	

✓ Spatial Reference System		
Horizontal Projection	NAD83(2011) / Mississippi East (ftUS)	1,791 of 1,791 Tiles
Horizontal Datum	NAD83 (National Spatial Reference System 2011)	1,791 of 1,791 Tiles
Horizontal Units	US survey foot	1,791 of 1,791 Tiles
Vertical Datum	NAVD88 height (ftUS)	1,791 of 1,791 Tiles
Vertical Units	US survey foot	1,791 of 1,791 Tiles
Storage Method	WKT	1,791 of 1,791 Tiles

✓ GPS Time Type		
Adjusted	1,791 of 1,791 Tiles	

✓ File Source ID Equals 0		
Yes	1,791 of 1,791 Tiles	

✓ VLR/EVLR Reserved Equals 0		
Yes	1,905 of 1,905 Records	

✓ Unnecessary Bytes At End Of File		
No	1,791 of 1,791 Tiles	

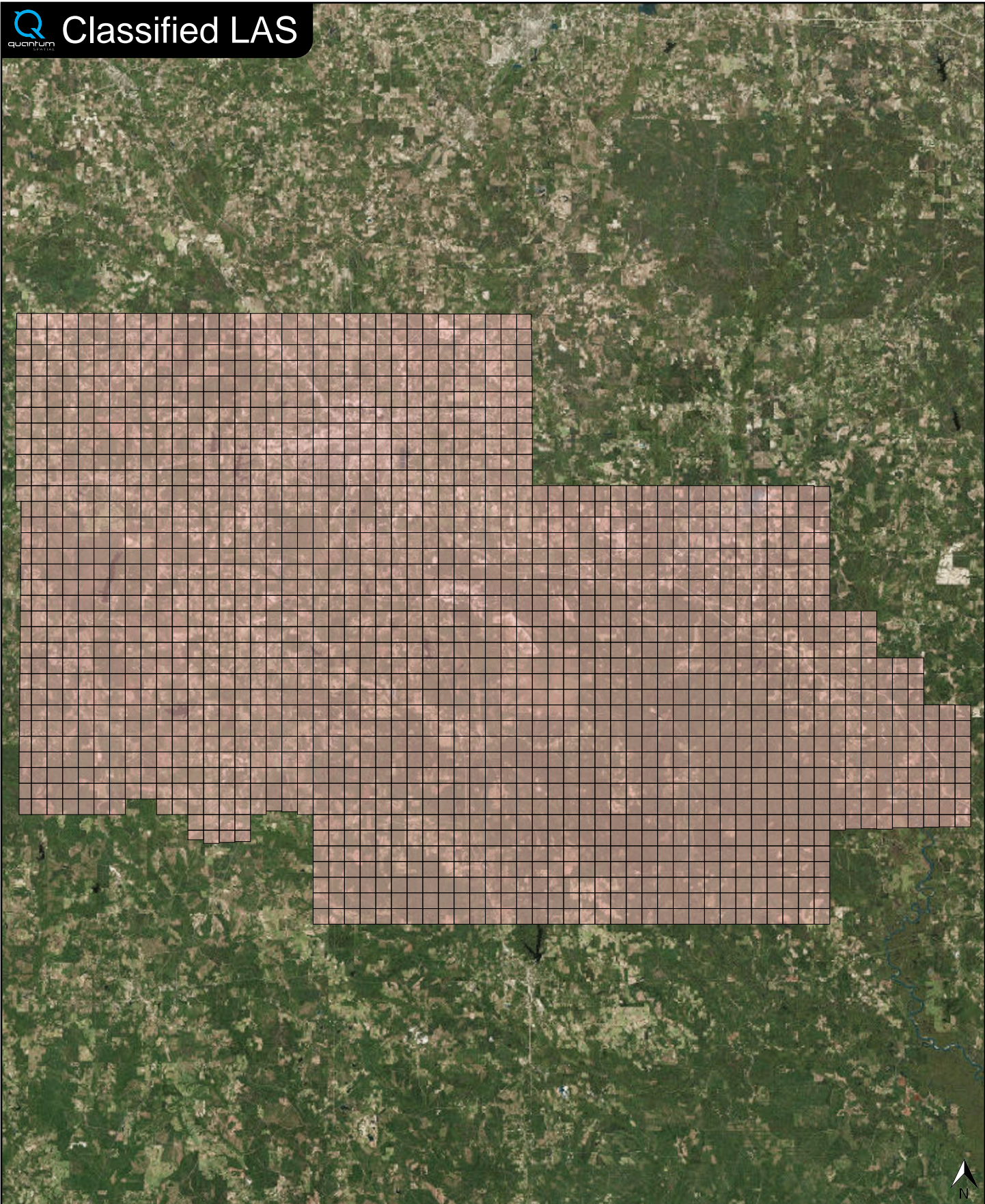
✓ Legacy Point Count Check		
Zero	1,791 of 1,791 Tiles	

✓ System Identifier		
Quantum Spatial	1,791 of 1,791 Tiles	

✓ Generating Software		
LiDAR Suite	1,791 of 1,791 Tiles	



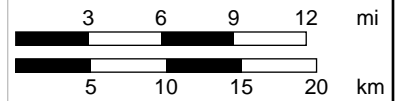
Classified LAS



Classified LAS Tiles (1,791)



N 31° 10' 54" W 89° 10' 35"



Scale 1:864

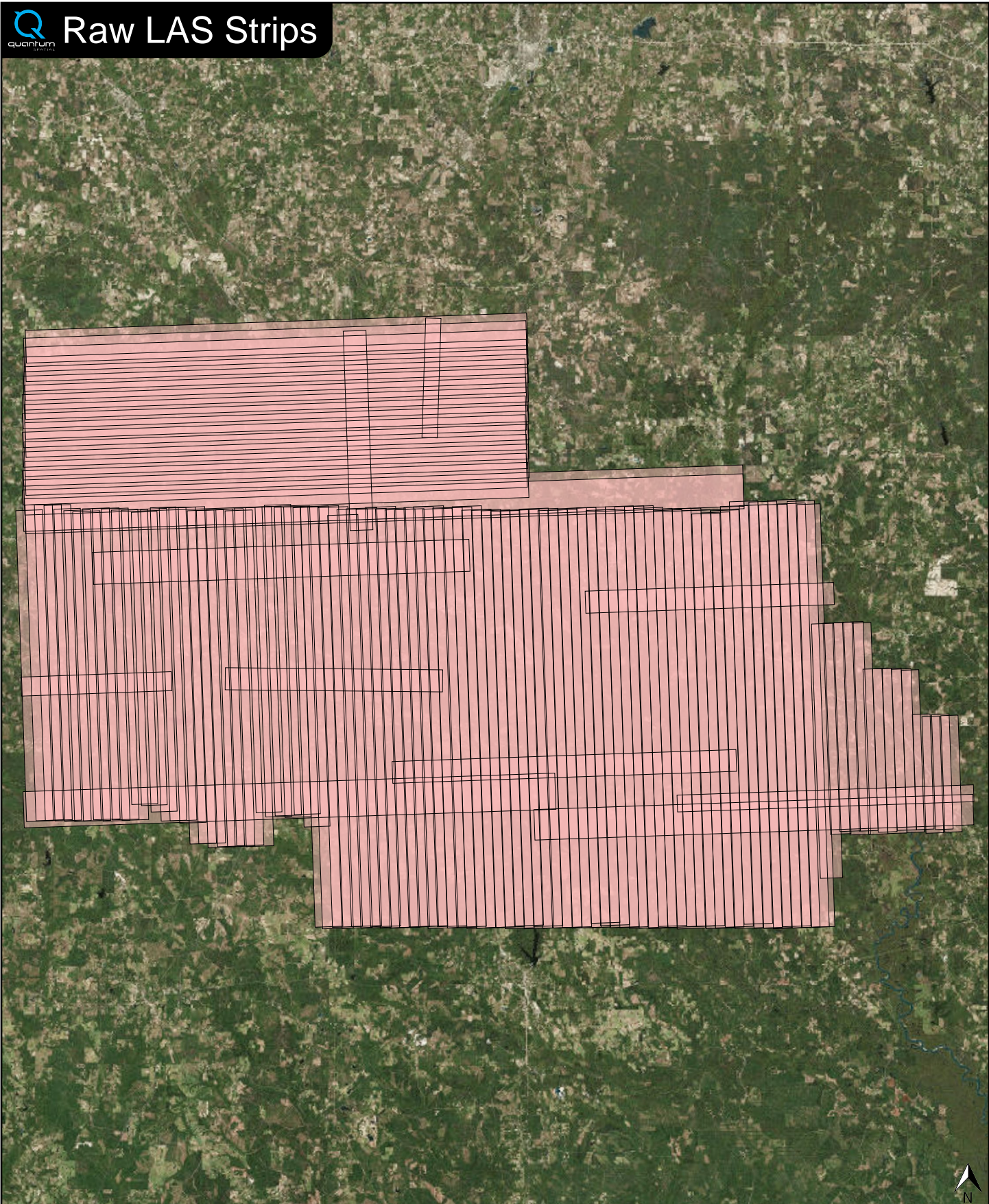
1 in = 7.93 mi



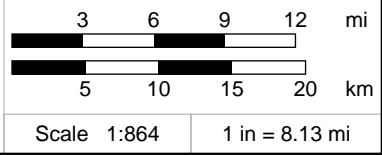
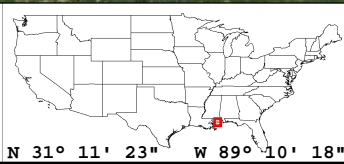
Raw LAS Flight Line Strips

Deliverable 2 Summary

✓ General		
Folder:	F:\MS_East\point_cloud\swathuncs	
Total # of Files:	126	(All Valid)
Total File Size:	749.4 GB	(804,677,409,972 bytes)
✓ Raw LAS Strips		
Elevation Range:	-768' to 2715'	
✓ LAS Version And Point Record Formats		
v1.4, Point Record Format 6	126 of 126 Strips	
✓ Spatial Reference System		
Horizontal Projection	NAD83(2011) / Mississippi East (ftUS)	126 of 126 Strips
Horizontal Datum	NAD83 (National Spatial Reference System 2011)	126 of 126 Strips
Horizontal Units	US survey foot	126 of 126 Strips
Vertical Datum	NAVD88 height (ftUS)	126 of 126 Strips
Vertical Units	US survey foot	126 of 126 Strips
Storage Method	WKT	126 of 126 Strips
✓ GPS Time Type		
Adjusted	126 of 126 Strips	
✓ File Source IDs		
Equals Zero:	None	
All Unique:	Yes	
FLs:	120 - 143, 145 - 164, 166 - 236, 902 - 911, 1165	
✓ VLR/EVLR Reserved Equals 0		
Yes	126 of 126 Records	
✓ Unnecessary Bytes At End Of File		
No	126 of 126 Strips	
✓ Legacy Point Count Check		
Zero	126 of 126 Strips	
✓ System Identifier		
Quantum Spatial	126 of 126 Strips	
✓ Generating Software		
LiDAR Suite	126 of 126 Strips	



FL Strips (126)

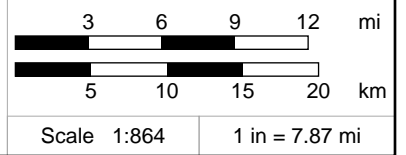
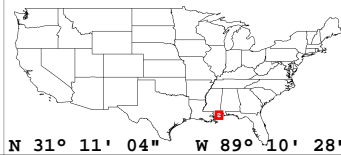
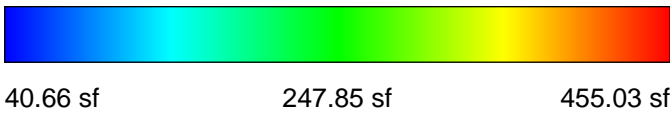
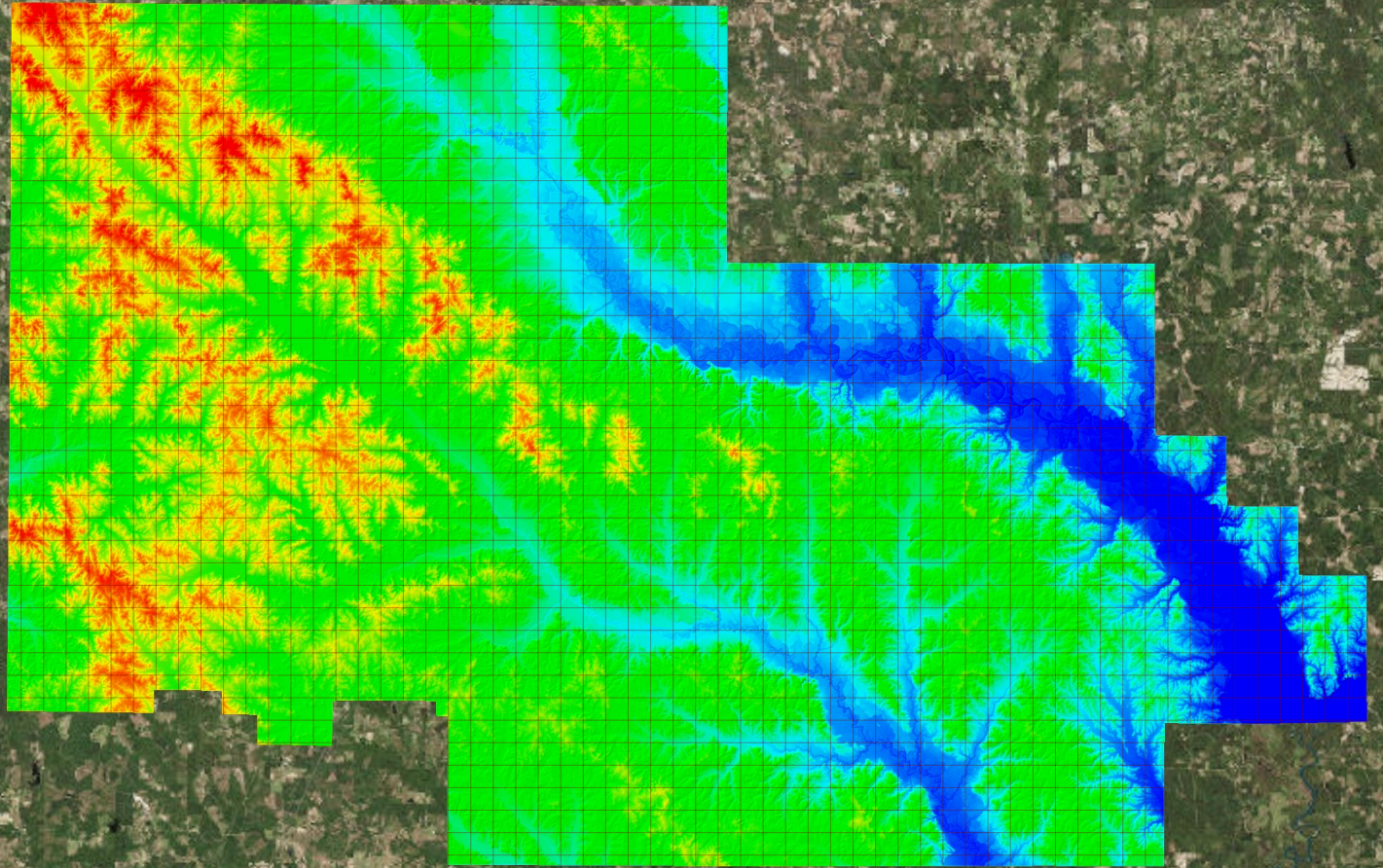


✓ General		
Folder:	F:\MS_East\bare_earth\be_rasters	
Total # of Files:	1,791	(All Valid)
Total File Size:	26.6 GB	(28,518,132,757 bytes)

✓ Tile Sizes		
Median Tile Size:	5,000' x 5,000'	
Minimum Tile Size:	98' x 383'	
Maximum Tile Size:	5,000' x 5,000'	
X Range:	726817.50' to 1029380.00'	
Y Range:	512477.50' to 704645.00'	
Elevation Range:	40.16' to 455.92'	

✓ Spatial Reference System		
Horizontal Projection	NAD_1983_2011_StatePlane_Mississippi_East_FIPS_2301_Feet	1,791 of 1,791 Tiles
Horizontal Datum	D_North_American_1983_2011	1,791 of 1,791 Tiles
Horizontal Units	Foot_US	1,791 of 1,791 Tiles
Vertical Datum	NAVD88 height (ftUS)	1,791 of 1,791 Tiles
Vertical Units	Foot_US	1,791 of 1,791 Tiles

✓ Raster		
File Type:	IMG	1,791 of 1,791
Bands:	1	1,791 of 1,791
Grid Size (pixels):	2000 x 2000	1,599 of 1,791
	OTHER	192 of 1,791
Pixel Resolution:	2.50000000' x 2.50000000'	1,791 of 1,791
Pixel Type:	32-bit Floating Point	1,791 of 1,791
Compression:	None	1,791 of 1,791
No Data Value:	-32767	1,791 of 1,791



✓ General		
Folder:	F:\MS_East\other\Intensity_Images	
Total # of Files:	1,791	(All Valid)
Total File Size:	9.4 GB	(10,070,549,424 bytes)

✓ Tile Sizes		
Median Tile Size:	5,000' x 5,000'	
Minimum Tile Size:	5,000' x 5,000'	
Maximum Tile Size:	5,000' x 5,000'	
X Range:	725000.00' to 1030000.00'	
Y Range:	510000.00' to 705000.00'	

✓ Spatial Reference System		
Horizontal Projection	NAD_1983_2011_StatePlane_Mississippi_East_FIPS_2301_Ft_US	1,791 of 1,791 Tiles
Horizontal Datum	NAD_1983_2011	1,791 of 1,791 Tiles
Horizontal Units	Foot_US	1,791 of 1,791 Tiles
Vertical Datum	NAVD88 height (ftUS)	1,791 of 1,791 Tiles
Vertical Units	Foot_US	1,791 of 1,791 Tiles

✓ Raster		
File Type:	TIF	1,791 of 1,791
Bands:	1	1,791 of 1,791
Grid Size (pixels):	2000 x 2000	1,791 of 1,791
Pixel Resolution:	2.50000000' x 2.50000000'	1,791 of 1,791
Pixel Type:	8-bit Unsigned Integer (MINISBLACK)	1,791 of 1,791
Compression:	NONE	1,791 of 1,791
No Data Value:	NONE	1,791 of 1,791

