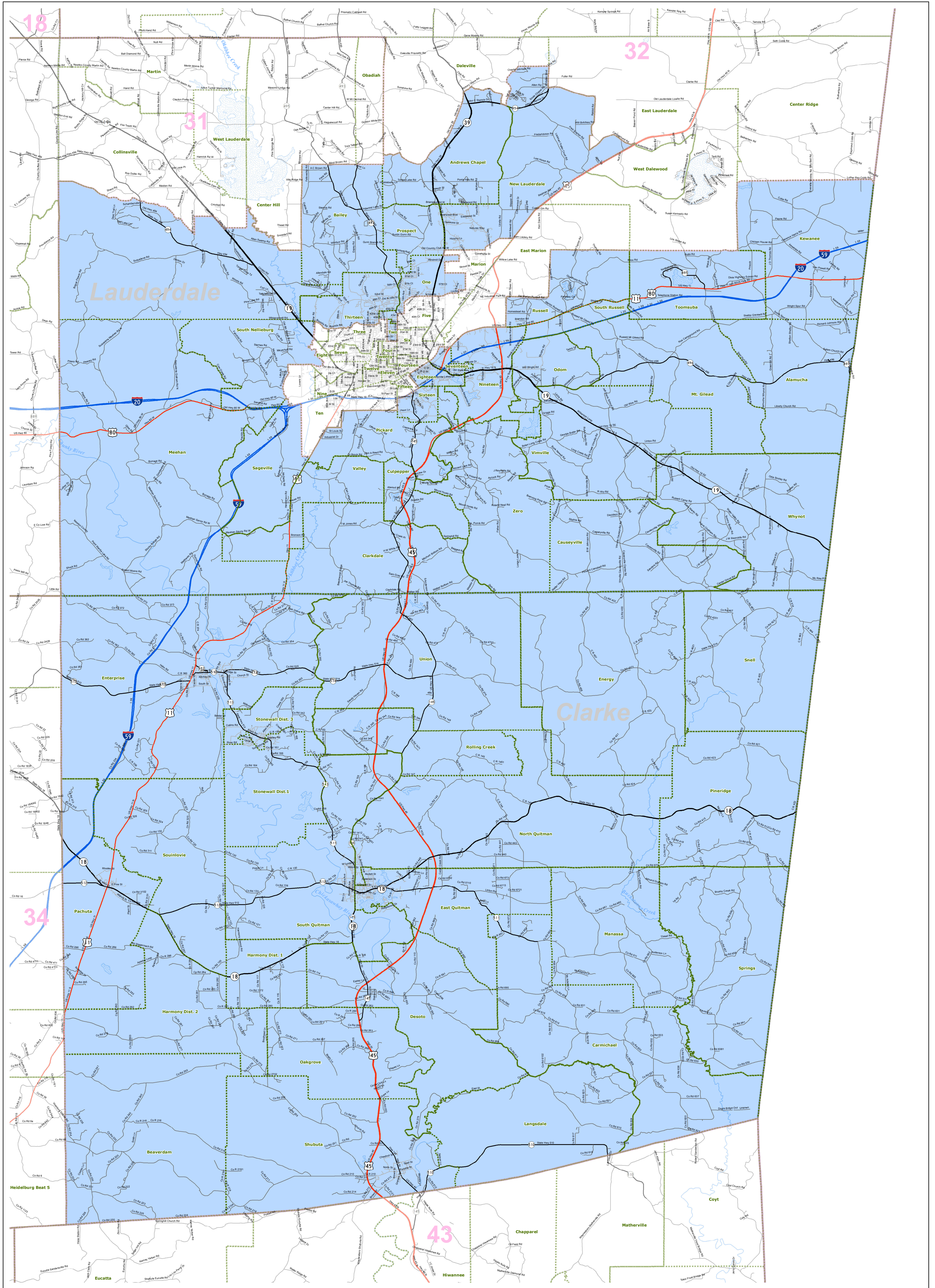
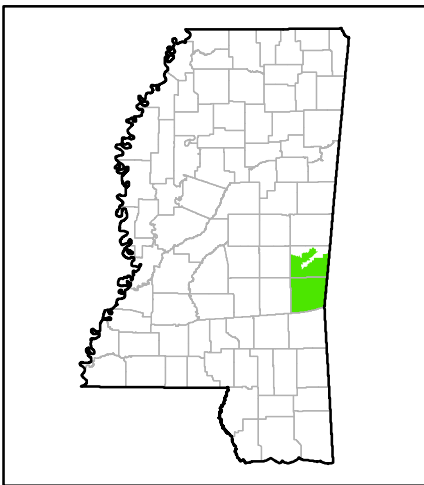


# MS Senate District 33 as Adopted May 3, 2012

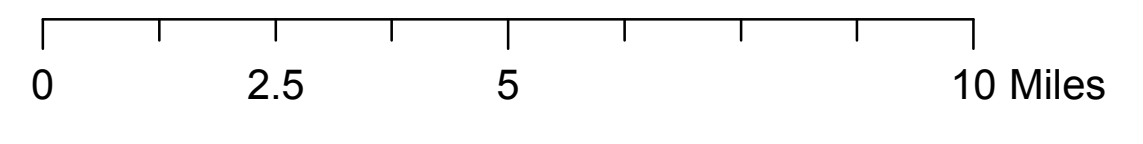


- Precinct Boundaries
- County Boundaries
- 1 - Interstates
- 2 - US Highways
- 3 - MS Hwys (1-99)
- 4 - MS Hwys (100-999)
- 5 - Natchez Trace
- 6 - County Roads
- 7 - City Streets
- Major Rivers



Horizontal Coordinate System Definition  
 Geographic  
 Latitude Resolution 0.000458  
 Longitude Resolution 0.000458  
 Geographic Coordinate Units Decimal degrees

Geodetic Model  
 Horizontal Datum Name North American Datum of 1983  
 Ellipsoid Name Geodetic Reference System 80  
 Semi-major Axis 6378137  
 Denominator of Flattening Ratio 298257



Election Districts were compiled on a whole block basis by Legislative staff. Base data (roads, cities, precincts, and counties) were compiled from 2010 U.S. Census Bureau TIGER Files. Although the information contained on this map is believed to be accurate, the Board of Trustees, State Institutions of Higher Learning/MARIS, the Standing Joint Committee on Reapportionment make no warranties as to the completeness, accuracy, reliability or suitability of the data for any use, or for any conclusions derived from this map.

Map prepared by MARIS: 5/10/2012