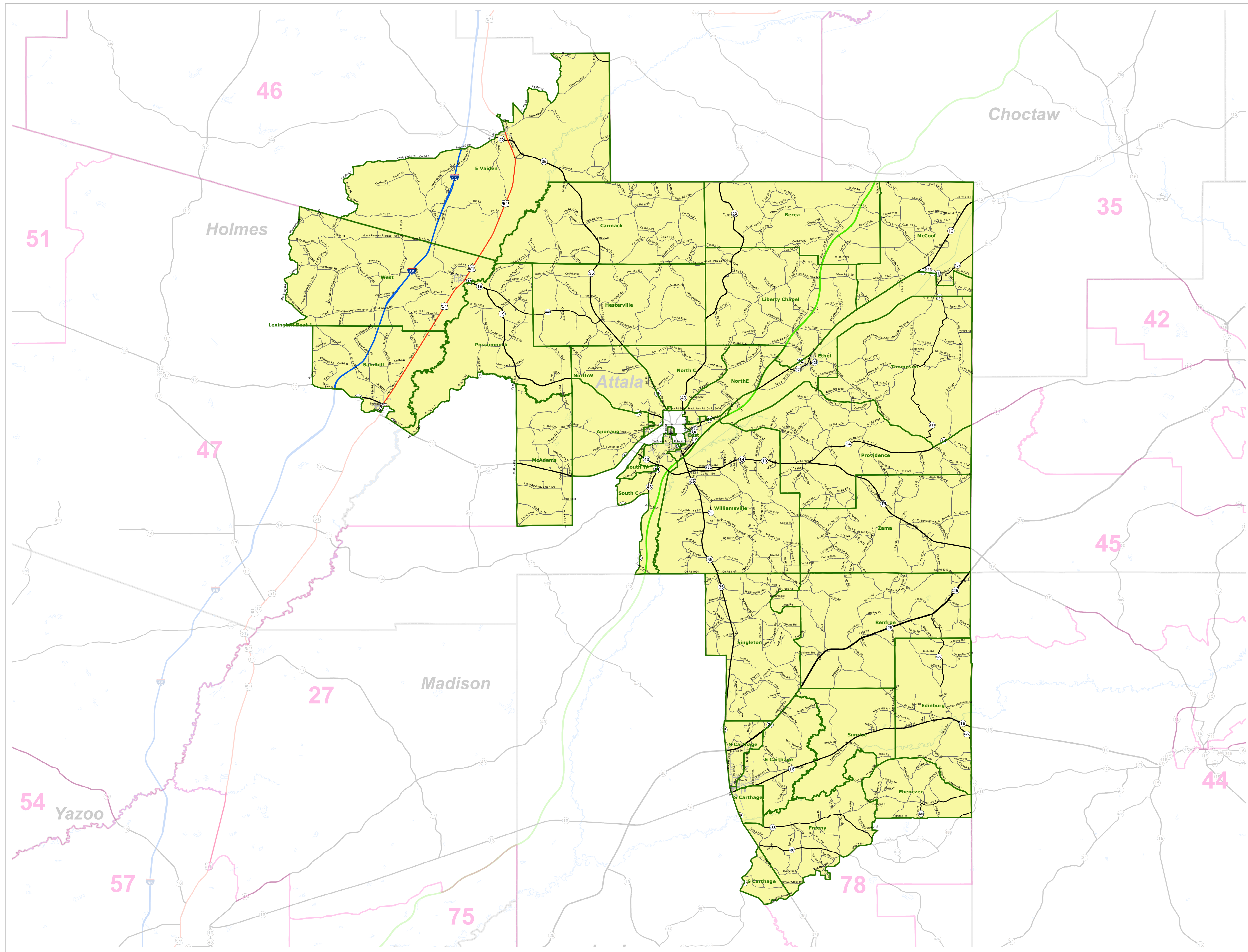
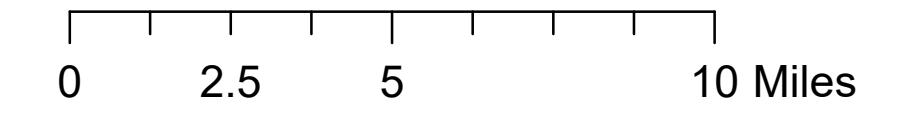
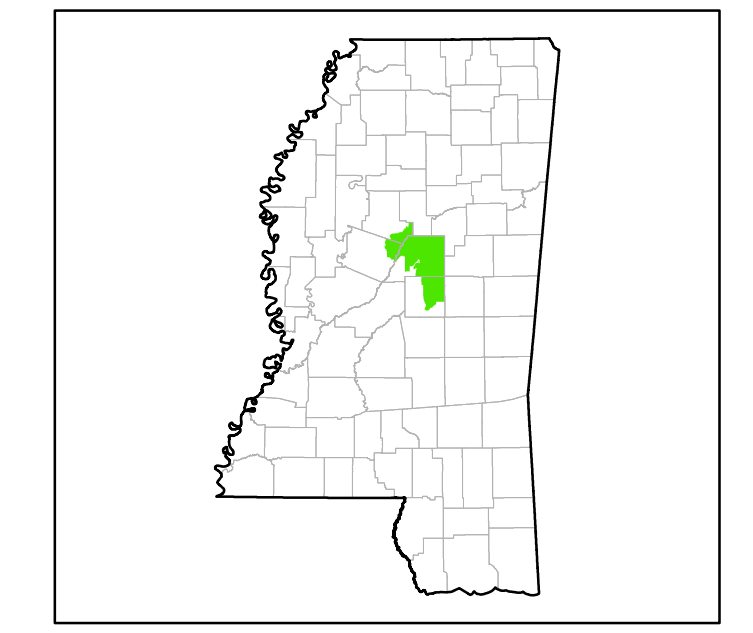


MS House District 48

March 2022



- Voting Precincts
- 1 - Interstates
- 2 - US Highways
- 3 - MS Hwys (1 -99)
- 4 - MS Hwys (100-999)
- 5 - Natchez Trace
- 6 - County Roads
- 7 - City Streets
- 8 - Trails
- River
- Counties
- Lakes/Ponds



Horizontal Coordinate System Definition
Geographic
Latitude Resolution 0.000458
Longitude Resolution 0.000458
Geographic Coordinate Units Decimal degrees

Geodetic Model
Horizontal Datum Name North American Datum of 1983
Ellipsoid Name Geodetic Reference System 80
Semi-major Axis 6378137
Denominator of Flattening Ratio 298257

Election Districts were compiled on a whole block basis by Legislative staff. Base data (roads, cities, precincts, and counties) were compiled from 2020 U.S. Census Bureau TIGER Files. Although the information contained on this map is believed to be accurate, the Board of Trustees, State Institutions of Higher Learning/MARIS, the Standing Joint Committee on Reapportionment make no warranties as to the completeness, accuracy, reliability or suitability of the data for any use, or for any conclusions derived from this map.