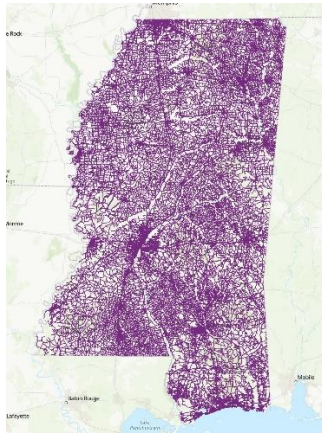


MS MDOT Road Centerlines November 2025

Type ESRI Shapefile



Tags roads, MDOT, linear-referencing model

Summary

Road centerlines from the MS Department of Transportation's Linear Referencing System

Description

The MDOT_CO_LRS feature is a complete dataset of roads in the State of Mississippi. All road mileages are referenced to the county they are contained. • This feature contains the State Maintained Routes as well as Local Roads. • All connectivity and topology checks have been performed. • The network contains ramps, frontage roads, intersection turnouts, as well as crossovers.

*** Updated data as of November 10, 2025 ***

Credits

MS Department of Transportation (MDOT), MARIS

Use limitations

none

Extent

There is no extent for this item.

Scale Range

Maximum (zoomed in) 1:5,000

Minimum (zoomed out) 1:150,000,000

Topics and Keywords ►

Themes or categories of the resource Transportation

Citation ►

Title MS MDOT Road Centerlines November 2025

Citation Contacts ▶

Responsible party - distributor

Individual's name Steve Walker
Organization's name MARIS
Contact's position GIS Operations Manager

Contact information ▶

Phone
Voice 601-432-6149
Address
Type physical
Delivery point 3825 Ridgewood Rd
City Jackson
Administrative area MS
Postal code 39211
Country US
e-mail address swalker@mississippi.edu

Responsible party - originator

Individual's name Evan Wright
Organization's name MDOT

Contact information ▶

Address
Type
e-mail address ewright@mdot.ms.gov

Resource Details ▶

Dataset languages English
Dataset character set utf8 - 8 bit UCS Transfer Format

Credits

MS Department of Transportation (MDOT), MARIS

ArcGIS item properties

Resource Points of Contact ▶

Point of contact - distributor
Individual's name Steve Walker
Organization's name MARIS
Contact's position GIS Operations Manager

Contact information ▶

Phone
Voice 6014346149
Address
Type physical
Delivery point 3825 Ridgewood Rd
City Jackson

Administrative area MS
Postal code 39211
Country US
e-mail address swalker@mississippi.edu

Resource Maintenance ▶

Resource maintenance
Update frequency annually

Resource Constraints ▶

Constraints
Limitations of use
none

Geoprocessing history ▶

Process
Process name
Date 2025-11-10 09:32:21
Tool location c:\program files\arcgis\pro\Resources\ArcToolbox\Toolboxes\Data
Management Tools.tbx\Rename
Command issued
Rename
F:\DATA\00_TRANSPORTATION\MDOT_Road_Centerlines\MDOT_Road_Centerlines_
Nov_2025\MDOT_CO_LRM.shp
F:\DATA\00_TRANSPORTATION\MDOT_Road_Centerlines\MDOT_Road_Centerlines_
Nov_2025\MS_MDOTLRM_Nov25.shp ShapeFile
Include in lineage when exporting metadata No

Distribution ▶

Distribution format
Name ESRI Shapefile
Version 11.2

Fields ▶

Details for object SRI ▶

Definition
Standard Route Identifier. Concatenation of the COUNTY NUMBER + "_" + INVENTORY

Definition source
MDOT

Field SRI ▶

Data type String
Width 15

Field description

Standard Route Identifier. Concatenation of the COUNTY NUMBER + "_" + INVENTORY NUMBER + PASS_DIR (PRIMARY/SECONDARY) + SEGMENT NUMBER. This field uniquely identifies a route in the state.

Description source

MDOT

Description of values

id

Details for object MP_START ►

Definition

The mile point where the segment begins within the county.

Definition source

MDOT

Field MP_START ►

Data type Double

Width 9

Precision 8

Scale 4

Field description

The mile point where the segment begins within the county.

Description source

MDOT

Description of values

mile marker

Details for object MP_END ►

Definition

The mile point where the segment ends within the county.

Definition source

MDOT

Field MP_END ►

Data type Double

Width 9

Precision 8

Scale 4

Field description

The mile point where the segment ends within the county.

Description source
MDOT

Description of values
mile marker

Details for object M_LENGTH ►

Definition
Calculated field which equals MP_END - MP_START

Definition source
MDOT

Field M_LENGTH ►
Data type Double
Width 9
Precision 8
Scale 4

Field description
Calculated field which equals MP_END - MP_START

Description source
MDOT

Description of values
length

Details for object ROUTE_CLAS ►

Definition
Class of Road See attributes below

Definition source
MDOT

Field Route Class ►
Data type String
Width 50

Field description

CHANNEL	Channelized turning lane used as a right turn movement at an intersection.
CROSSOVER	Used to navigate between primary and secondary directions of a divided facility.
FC	This classification signifies that at least some portion of the route is of functional class higher than local. This classification is not our official functional class designation.
FR	Federal Routes (Currently the only federal route we have is the Natchez Trace)

LOCAL	This classification indicates a route that is not designated.
MS	Mississippi Highways
RAMP	Connects mainline to mainline at grade separated interchanges.
REST AREA	Dedicated route segment for rest area ingress and egress
ROUNDABOUT	Circular portion of this specialized Intersection
US	US Highways
WEIGH STATION	Dedicated route segment for weigh station ingress and egress
IH	Interstate Highways

Description source
MDOT

Description of values
see chart above

Details for object ROAD_NAME ►

Definition
name of road if available

Definition source
MDOT

Field ROAD_NAME ►
Data type String
Width 60

Field description
When available this field contains the road name of the particular route.

Description source
MDOT

Description of values
name

Details for object COUNTY ►

Definition
name of county

Definition source
MDOT

Field COUNTY ►
Data type Integer
Width 10
Precision 10
Scale 0

Field description
Numeric identifier for the county number. 1-82 (See County Lookup Below)

Description source
MDOT

Description of values
COUNTYNMBR COUNTYNAME

1	Adams
2	Alcorn
3	Amite
4	Attala
5	Benton
6	Bolivar
7	Calhoun
8	Carroll
9	Chickasaw
10	Choctaw
11	Claiborne
12	Clarke
13	Clay
14	Coahoma
15	Copiah
16	Covington
17	Desoto
18	Forrest
19	Franklin
20	George
21	Greene
22	Grenada
23	Hancock
24	Harrison
25	Hinds
26	Holmes
27	Humphreys
28	Issaquena
29	Itawamba
30	Jackson
31	Jasper
32	Jefferson
33	Jefferson Davis
34	Jones
35	Kemper
36	Lafayette
37	Lamar
38	Lauderdale
39	Lawrence
40	Leake

41	Lee
42	Leflore
43	Lincoln
44	Lowndes
45	Madison
46	Marion
47	Marshall
48	Monroe
49	Montgomery
50	Neshoba
51	Newton
52	Noxubee
53	Oktibbeha
54	Panola
55	Pearl River
56	Perry
57	Pike
58	Pontotoc
59	Prentiss
60	Quitman
61	Rankin
62	Scott
63	Sharkey
64	Simpson
65	Smith
66	Stone
67	Sunflower
68	Tallahatchie
69	Tate
70	Tippah
71	Tishomingo
72	Tunica
73	Union
74	Walthall
75	Warren
76	Washington
77	Wayne
78	Webster
79	Wilkinson
80	Winston
81	Yalobusha
82	Yazoo

Details for object ROUTE_ID ►

Definition
route id

Definition source

MDOT

Field ROUTE_ID ►

Data type String

Width 8

Field description

Non zero padded identifier for a route in a county. Can be followed by an X (Crossover) or a C (Channel). If followed by an A, E, or W this is to signify Alternate, East or West. If the route is a State Route, US Route, or Interstate Route the route id is representative of its signing and designation. (i.e. MS 25 is 25 in each county it passes through so long as the route class is MS as well). Route IDs are only unique to one county unless combined with a route class in the case of a State Route, US Route, or Interstate Route. A route id can also be unique when paired with a county and a pass_dir.

Description source

MDOT

Description of values

ID

Details for object PASS_DIR ►

Definition

Denotes the specific direction of a route, P (primary) or S (secondary).

Definition source

MDOT

Field PASS_DIR ►

Data type String

Width 1

Precision 0

Field description

Denotes the specific direction of a route, P (primary) or S (secondary). Previous systems that were single centerline would have only had a primary direction. The secondary direction is the roadway running in the opposing direction to the primary roadway (Divided Highway) for a single route.

Description source

MDOT

Description of values direction

Details for object SEG_NO ►

Definition

Denotes the specific segment of a route in a county.

Definition source
MDOT

Field SEG_NO ►
Data type Integer
Width 10
Precision 10
Scale 0

Field description
Denotes the specific segment of a route in a county. Segmentation can occur due to routes overlapping one another as well as offsets at intersections.

Description source
MDOT

Description of values
number

Details for object INV_NO ►

Definition
Zero padded version of the ROUTE_ID field. Used to reference legacy data that utilized fixed width fields

Definition source
MDOT

Field INV_NO ►
Data type String
Width 8

Field description
Zero padded version of the ROUTE_ID field. Used to reference legacy data that utilized fixed width fields.

Description source
MDOT

Description of values
numbers

Details for object ID1 ►

Definition
Primary ID field. Should not be used for long term referencing since this can change with each publication.

Definition source
MDOT

Field ID1 ►
Data type Integer
Width 10
Precision 10
Scale 0

Field description
Primary ID field. Should not be used for long term referencing since this can change with each publication.

Description source
MDOT

Description of values
id

[Details for object WM_VALIDFR ►](#)

Definition
Date that a segment went live (Valid From).

Definition source
MDOT

Field WM_VALIDFR ►
Data type String
Width 24

Field description
Date that a segment went live (Valid From). With our current data model, most roads will have the 20th of March 2013. If a segment has had a change since this date, the valid from time will have changed to reflect this change.

Description source
MDOT

Description of values
Date

[Details for object WM_VALIDTI ►](#)

Definition
In the event that a end of life date were known for a route and the new alignment had been established at a future date this field would show the end of serviceable life date for any segment involved. (Valid Till)

Definition source

MDOT

Field WM_VALIDTI ▶

Data type String

Width 24

Field description

In the event that a end of life date were known for a route and the new alignment had been established at a future date this field would show the end of serviceable life date for any segment involved. (Valid Till)

Description source

MDOT

Description of values

none

Details for object MOD_STATUS ▶

Definition

Indicates if segment was changed since last publication

Definition source

MDOT

Field MOD_STATUS ▶

Data type String

Width 6

Field description

Indicates if segment was changed since last publication

Description source

MDOT

Description of values

status

Details for object Z_ORDER ▶

Definition

none

Definition source

MDOT

Field Z_ORDER ▶

Data type Small Integer

Width 3

Precision 3

Field description
none

Description source
MDOT

Description of values
N/A

[Details for object CTRL_SEQ ►](#)

Definition
none

Definition source
MDOT

Field CTRL_SEQ ►
Data type Small Integer
Width 3
Precision 3
Scale 0

Field description
none

Description source
MDOT

Description of values
N?A

Metadata Details ►

Metadata language English
Metadata character set utf8 - 8 bit UCS Transfer Format

Scope of the data described by the metadata dataset

Last update ⇔ 2025-11-10

ArcGIS metadata properties

Metadata format ArcGIS 1.0
Standard or profile used to edit metadata ISO19115_3

Created in ArcGIS for the item 2025-11-10 09:32:21

Automatic updates

Have been performed No

Metadata Contacts ▶

Metadata contact - distributor

Individual's name Steve Walker

Organization's name MARIS

Contact's position GIS Operations Manager

Contact information ▶

Phone

Voice 6014346149

Address

Type physical

Delivery point 3825 Ridgewood Rd

City Jackson

Administrative area MS

Postal code 39211

Country US

e-mail address swalker@mississippi.edu

Thumbnail and Enclosures ▶

Thumbnail type
Image file

Thumbnail