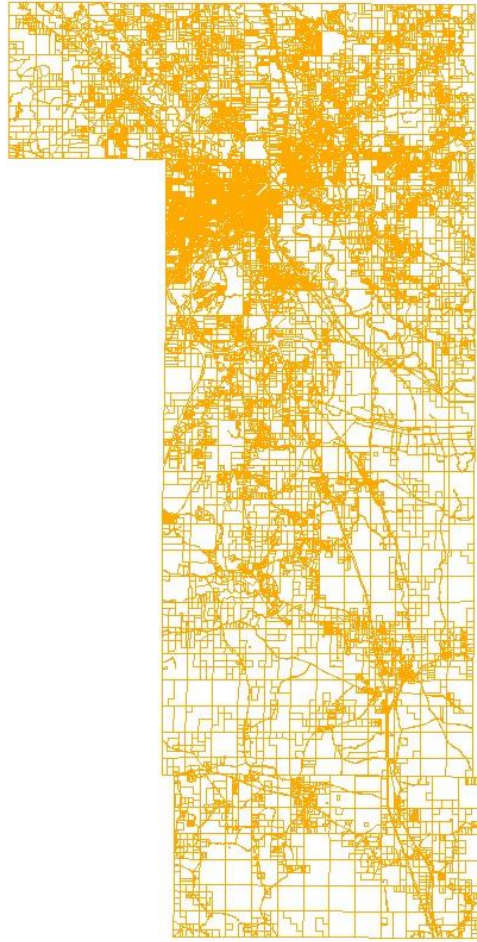


# FORREST\_PARCELS

Shapefile



## Tags

FORREST, MDEQ, PARCELS, TRISTATE, MISSISSIPPI, COUNTY

## Summary

Development of the MDEM Cadastral Framework Data Layer

## Description

In accordance with MDEQ guidance and requirements, this database contains the FORREST County, MS parcel polygons and center points of those polygons with all available data therein.

Fields not available from originating data: SUBNAME, PLATREF, PLATDATE, ZONING

## Credits

FORREST County Tax assessor's office, Tristate Consulting

## Use limitations

There are no access and use limitations for this item.

## Extent

**West** -89.451563    **East** -89.137874

**North** 31.435121    **South** 30.908834

## Scale Range

**Maximum (zoomed in)** 1:5,000

**Minimum (zoomed out)** 1:500,000

## ArcGIS Metadata ►

## Topics and Keywords ►

\* **CONTENT TYPE** Downloadable Data  
EXPORT TO FGDC CSDGM XML FORMAT AS RESOURCE DESCRIPTION No

**THEME KEYWORDS** FORREST, MDEQ, PARCELS, TRISTATE, MISSISSIPPI, COUNTY

*Hide Topics and Keywords ▲*

## Citation ►

\* **TITLE** FORREST\_PARCELS  
**PUBLICATION DATE** 2022-11-22

**PRESENTATION FORMATS** digital map

*Hide Citation ▲*

## Citation Contacts ►

**RESPONSIBLE PARTY**  
**ORGANIZATION'S NAME** Aaron Hosford, Tristate Consulting, GIS Analyst  
**CONTACT'S ROLE** originator

*Hide Citation Contacts ▲*

## Resource Details ►

**DATASET LANGUAGES** English (UNITED STATES)

**STATUS** completed

**SPATIAL REPRESENTATION TYPE** vector

\* **PROCESSING ENVIRONMENT** Version 6.2 (Build 9200) ; Esri ArcGIS 10.9.1.28388

### CREDITS

FORREST County Tax assessor's office, Tristate Consulting

### ARCGIS ITEM PROPERTIES

\* **NAME** FORREST\_PARCELS

\* **SIZE** 9.260

\* **LOCATION** file:///\\DESKTOP-

TP9LNVL\F\$\DATA\00\_CADASTRAL\Statewide\_Parcels\_2023\Sample\_Data\FORREST\_PARCELS.shp

\* **ACCESS PROTOCOL** Local Area Network

[Hide Resource Details ▲](#)

## Extents ►

### EXTENT

#### DESCRIPTION

Time required for completion.

#### TEMPORAL EXTENT

BEGINNING DATE 2022-11-11

ENDING DATE 2023-01-03

### EXTENT

#### GEOGRAPHIC EXTENT

##### BOUNDING RECTANGLE

WEST LONGITUDE -90.312182

EAST LONGITUDE -89.721989

SOUTH LATITUDE 34.711643

NORTH LATITUDE 34.996329

### EXTENT

#### GEOGRAPHIC EXTENT

##### BOUNDING RECTANGLE

EXTENT TYPE Extent used for searching

\* WEST LONGITUDE -89.451563

\* EAST LONGITUDE -89.137874

\* NORTH LATITUDE 31.435121

\* SOUTH LATITUDE 30.908834

\* EXTENT CONTAINS THE RESOURCE Yes

#### EXTENT IN THE ITEM'S COORDINATE SYSTEM

\* WEST LONGITUDE 791428.661858

\* EAST LONGITUDE 888742.261849

\* SOUTH LATITUDE 512898.306805

\* NORTH LATITUDE 703929.553678

\* EXTENT CONTAINS THE RESOURCE Yes

[Hide Extents ▲](#)

## Resource Maintenance ►

### RESOURCE MAINTENANCE

UPDATE FREQUENCY annually

[Hide Resource Maintenance ▲](#)

## Spatial Reference ►

### ARCGIS COORDINATE SYSTEM

\* TYPE Projected

\* GEOGRAPHIC COORDINATE REFERENCE GCS\_NAD\_1983\_2011

\* PROJECTION NAD\_1983\_2011\_StatePlane\_Mississippi\_East\_FIPS\_2301\_Ft\_US

\* COORDINATE REFERENCE DETAILS

#### PROJECTED COORDINATE SYSTEM

WELL-KNOWN IDENTIFIER 103088

X ORIGIN -17463400

Y ORIGIN -43523900  
XY SCALE 137248168.13086346  
Z ORIGIN -100000  
Z SCALE 10000  
M ORIGIN -100000  
M SCALE 10000  
XY TOLERANCE 0.0032808333333333331  
Z TOLERANCE 0.001  
M TOLERANCE 0.001  
HIGH PRECISION true  
LATEST WELL-KNOWN IDENTIFIER 6507  
WELL-KNOWN TEXT  
PROJCS["NAD\_1983\_2011\_StatePlane\_Mississippi\_East\_FIPS\_2301\_Ft\_US",GEOGCS["GCS\_NAD\_1983\_2011",DATUM["D\_NAD\_1983\_2011",SPHEROID["GRS\_1980",6378137.0,298.257222101]],PRIMEM["Greenwich",0.0],UNIT["Degree",0.0174532925199433]],PROJECTION["Transverse\_Mercator"],PARAMETER["False\_Easting",984250.0],PARAMETER["False\_Northing",0.0],PARAMETER["Central\_Meridian",-88.83333333333333],PARAMETER["Scale\_Factor",0.99995],PARAMETER["Latitude\_Of\_Origin",29.5],UNIT["Foot\_US",0.3048006096012192],AUTHORITY["EPSG",6507]]

REFERENCE SYSTEM IDENTIFIER

- \* VALUE 6507
- \* CODESPACE EPSG
- \* VERSION 8.2.10(10.3.1)

[Hide Spatial Reference ▲](#)

## Spatial Data Properties ►

VECTOR ►

- \* LEVEL OF TOPOLOGY FOR THIS DATASET geometry only

GEOMETRIC OBJECTS

- FEATURE CLASS NAME FORREST\_PARCELS
- \* OBJECT TYPE composite
  - \* OBJECT COUNT 42078

[Hide Vector ▲](#)

ARCGIS FEATURE CLASS PROPERTIES ►

- FEATURE CLASS NAME FORREST\_PARCELS
- \* FEATURE TYPE Simple
  - \* GEOMETRY TYPE Polygon
  - \* HAS TOPOLOGY FALSE
  - \* FEATURE COUNT 42078
  - \* SPATIAL INDEX TRUE
  - \* LINEAR REFERENCING FALSE

[Hide ArcGIS Feature Class Properties ▲](#)

[Hide Spatial Data Properties ▲](#)

## Geoprocessing history ►

### PROCESS

PROCESS NAME Create Feature Class

DATE 2022-10-31 15:27:25

TOOL LOCATION c:\program files (x86)\arcgis\desktop10.8\ArcToolbox\Toolboxes\Data Management Tools.tbx\CreateFeatureclass

#### COMMAND ISSUED

```
CreateFeatureclass U:\Jobs\GIS\MDEQ_2\FORREST\FINAL MDEQ_FORREST_PARCELS.shp
POLYGON U:\Jobs\GIS\MDEQ\WALTHALL\FINAL_DATA\MDEQ_WALTHALL_PARCELS.shp
DISABLED DISABLED
"PROJCS['NAD_1983_StatePlane_Mississippi_East_FIPS_2301_Feet',GEOGCS['GCS_No
rth_American_1983',DATUM['D_North_American_1983',SPHEROID['GRS_1980',6378137
.0,298.257222101]],PRIMEM['Greenwich',0.0],UNIT['Degree',0.0174532925199433]
],PROJECTION['Transverse_Mercator'],PARAMETER['False_Easting',984250.0],PARA
METER['False_Northing',0.0],PARAMETER['Central_Meridian',-
88.83333333333333],PARAMETER['Scale_Factor',0.99995],PARAMETER['Latitude_Of_
Origin',29.5],UNIT['Foot_US',0.3048006096012192]];-17463400 -43523900
3048.00609601219;-100000 10000;-100000
10000;0.0035;0.0035;0.0035;IsHighPrecision" # 0 0 0
```

INCLUDE IN LINEAGE WHEN EXPORTING METADATA No

### PROCESS

DATE 2023-07-25 15:40:04

TOOL LOCATION c:\program files\arcgis\pro\Resources\ArcToolbox\Toolboxes\Data Management Tools.tbx\Rename

#### COMMAND ISSUED

```
Rename "C:\Users\traceym\Desktop\work\MDEM\2023 Delivery
all\Cadastral\Cadastral_WO-002205.003\SOURCE
DATA\FORREST\MDEQ_FORREST_PARCELS.shp"
"C:\Users\traceym\Desktop\work\MDEM\2023 Delivery
all\Cadastral\Cadastral_WO-002205.003\SOURCE
DATA\FORREST\FORREST_PARCELS.shp" ShapeFile
```

INCLUDE IN LINEAGE WHEN EXPORTING METADATA No

[Hide Geoprocessing history ▲](#)

## Distribution ►

### DISTRIBUTION FORMAT

\* NAME Shapefile

### TRANSFER OPTIONS

\* TRANSFER SIZE 9.260

[Hide Distribution ▲](#)

## Fields ►

### DETAILS FOR OBJECT FORREST\_PARCELS ►

\* TYPE Feature Class

\* ROW COUNT 42078

FIELD FID ►

- \* ALIAS FID
- \* DATA TYPE OID
- \* WIDTH 4
- \* PRECISION 0
- \* SCALE 0
- \* FIELD DESCRIPTION  
Internal feature number.
  
- \* DESCRIPTION SOURCE  
Esri
  
- \* DESCRIPTION OF VALUES  
Sequential unique whole numbers that are automatically generated.

*Hide Field FID ▲*

- FIELD STNAME ►
- \* ALIAS STNAME
  - \* DATA TYPE String
  - \* WIDTH 50
  - \* PRECISION 0
  - \* SCALE 0

*Hide Field STNAME ▲*

- FIELD PLATREF ►
- \* ALIAS PLATREF
  - \* DATA TYPE String
  - \* WIDTH 15
  - \* PRECISION 0
  - \* SCALE 0

*Hide Field PLATREF ▲*

- FIELD Shape ►
- \* ALIAS Shape
  - \* DATA TYPE Geometry
  - \* WIDTH 0
  - \* PRECISION 0
  - \* SCALE 0
  - FIELD DESCRIPTION  
Feature geometry.
  
  - DESCRIPTION SOURCE  
Esri

DESCRIPTION OF VALUES  
Coordinates defining the features.

[Hide Field Shape ▲](#)

FIELD SCITY ▶

- \* ALIAS SCITY
- \* DATA TYPE String
- \* WIDTH 16
- \* PRECISION 0
- \* SCALE 0

[Hide Field SCITY ▲](#)

FIELD MCITY1 ▶

- \* ALIAS MCITY1
- \* DATA TYPE String
- \* WIDTH 16
- \* PRECISION 0
- \* SCALE 0

[Hide Field MCITY1 ▲](#)

FIELD LATDEC ▶

- \* ALIAS LATDEC
- \* DATA TYPE Double
- \* WIDTH 19
- \* PRECISION 0
- \* SCALE 0

[Hide Field LATDEC ▲](#)

FIELD CULT\_AC2 ▶

- \* ALIAS CULT\_AC2
- \* DATA TYPE Single
- \* WIDTH 13
- \* PRECISION 0
- \* SCALE 0

[Hide Field CULT\\_AC2 ▲](#)

FIELD CAMA ▶

- \* ALIAS CAMA
- \* DATA TYPE String
- \* WIDTH 50

- \* PRECISION 0
- \* SCALE 0

*Hide Field CAMA ▲*

FIELD ZONING ►

- \* ALIAS ZONING
- \* DATA TYPE String
- \* WIDTH 10
- \* PRECISION 0
- \* SCALE 0

*Hide Field ZONING ▲*

FIELD MZIP2 ►

- \* ALIAS MZIP2
- \* DATA TYPE String
- \* WIDTH 9
- \* PRECISION 0
- \* SCALE 0

*Hide Field MZIP2 ▲*

FIELD DEEDREF ►

- \* ALIAS DEEDREF
- \* DATA TYPE String
- \* WIDTH 15
- \* PRECISION 0
- \* SCALE 0

*Hide Field DEEDREF ▲*

FIELD MZIP1 ►

- \* ALIAS MZIP1
- \* DATA TYPE String
- \* WIDTH 9
- \* PRECISION 0
- \* SCALE 0

*Hide Field MZIP1 ▲*

FIELD PPIN ►

- \* ALIAS PPIN
- \* DATA TYPE Integer
- \* WIDTH 10



\* PRECISION 10  
\* SCALE 0

*Hide Field PPIN ▲*

FIELD RANGE ►

\* ALIAS RANGE  
\* DATA TYPE String  
\* WIDTH 10  
\* PRECISION 0  
\* SCALE 0

*Hide Field RANGE ▲*

FIELD TAXYEAR ►

\* ALIAS TAXYEAR  
\* DATA TYPE String  
\* WIDTH 4  
\* PRECISION 0  
\* SCALE 0

*Hide Field TAXYEAR ▲*

FIELD SUBNAME ►

\* ALIAS SUBNAME  
\* DATA TYPE String  
\* WIDTH 50  
\* PRECISION 0  
\* SCALE 0

*Hide Field SUBNAME ▲*

FIELD TAXACRES ►

\* ALIAS TAXACRES  
\* DATA TYPE Double  
\* WIDTH 19  
\* PRECISION 0  
\* SCALE 0

*Hide Field TAXACRES ▲*

FIELD MSTATE1 ►

\* ALIAS MSTATE1  
\* DATA TYPE String  
\* WIDTH 2

- \* PRECISION 0
- \* SCALE 0

*Hide Field MSTATE1 ▲*

FIELD TWSP ►

- \* ALIAS TWSP
- \* DATA TYPE String
- \* WIDTH 10
- \* PRECISION 0
- \* SCALE 0

*Hide Field TWSP ▲*

FIELD SUBDIVNO ►

- \* ALIAS SUBDIVNO
- \* DATA TYPE String
- \* WIDTH 10
- \* PRECISION 0
- \* SCALE 0

*Hide Field SUBDIVNO ▲*

FIELD GISACRES ►

- \* ALIAS GISACRES
- \* DATA TYPE Double
- \* WIDTH 19
- \* PRECISION 0
- \* SCALE 0

*Hide Field GISACRES ▲*

FIELD STCNTYFIPS ►

- \* ALIAS STCNTYFIPS
- \* DATA TYPE String
- \* WIDTH 10
- \* PRECISION 0
- \* SCALE 0

*Hide Field STCNTYFIPS ▲*

FIELD MAILADD2 ►

- \* ALIAS MAILADD2
- \* DATA TYPE String
- \* WIDTH 35

- \* PRECISION 0
- \* SCALE 0

*Hide Field MAILADD2 ▲*

FIELD MSTATE2 ►

- \* ALIAS MSTATE2
- \* DATA TYPE String
- \* WIDTH 2
- \* PRECISION 0
- \* SCALE 0

*Hide Field MSTATE2 ▲*

FIELD TOTAL\_AC ►

- \* ALIAS TOTAL\_AC
- \* DATA TYPE Single
- \* WIDTH 13
- \* PRECISION 0
- \* SCALE 0

*Hide Field TOTAL\_AC ▲*

FIELD LONGDEC ►

- \* ALIAS LONGDEC
- \* DATA TYPE Double
- \* WIDTH 19
- \* PRECISION 0
- \* SCALE 0

*Hide Field LONGDEC ▲*

FIELD MCITY2 ►

- \* ALIAS MCITY2
- \* DATA TYPE String
- \* WIDTH 16
- \* PRECISION 0
- \* SCALE 0

*Hide Field MCITY2 ▲*

FIELD SSTATE ►

- \* ALIAS SSTATE
- \* DATA TYPE String
- \* WIDTH 2

- \* PRECISION 0
- \* SCALE 0

*Hide Field SSTATE ▲*

FIELD STFIPS ►

- \* ALIAS STFIPS
- \* DATA TYPE String
- \* WIDTH 10
- \* PRECISION 0
- \* SCALE 0

*Hide Field STFIPS ▲*

FIELD LEGLDESC ►

- \* ALIAS LEGLDESC
- \* DATA TYPE String
- \* WIDTH 254
- \* PRECISION 0
- \* SCALE 0

*Hide Field LEGLDESC ▲*

FIELD INSIDE\_X ►

- \* ALIAS INSIDE\_X
- \* DATA TYPE Double
- \* WIDTH 19
- \* PRECISION 0
- \* SCALE 0

*Hide Field INSIDE\_X ▲*

FIELD UNCULT\_AC2 ►

- \* ALIAS UNCULT\_AC2
- \* DATA TYPE Single
- \* WIDTH 13
- \* PRECISION 0
- \* SCALE 0

*Hide Field UNCULT\_AC2 ▲*

FIELD LANDVAL ►

- \* ALIAS LANDVAL
- \* DATA TYPE Integer
- \* WIDTH 10

- \* PRECISION 10
- \* SCALE 0

*Hide Field LANDVAL ▲*

FIELD SECTION ►

- \* ALIAS SECTION
- \* DATA TYPE String
- \* WIDTH 3
- \* PRECISION 0
- \* SCALE 0

*Hide Field SECTION ▲*

FIELD CNTYFIPS ►

- \* ALIAS CNTYFIPS
- \* DATA TYPE String
- \* WIDTH 10
- \* PRECISION 0
- \* SCALE 0

*Hide Field CNTYFIPS ▲*

FIELD SITEADD ►

- \* ALIAS SITEADD
- \* DATA TYPE String
- \* WIDTH 50
- \* PRECISION 0
- \* SCALE 0

*Hide Field SITEADD ▲*

FIELD IMPVAL2 ►

- \* ALIAS IMPVAL2
- \* DATA TYPE Integer
- \* WIDTH 10
- \* PRECISION 10
- \* SCALE 0

*Hide Field IMPVAL2 ▲*

FIELD DEEDDATE ►

- \* ALIAS DEEDDATE
- \* DATA TYPE Date
- \* WIDTH 8

- \* PRECISION 0
- \* SCALE 0

*Hide Field DEEDDATE ▲*

FIELD PARNO ►

- \* ALIAS PARNO
- \* DATA TYPE String
- \* WIDTH 24
- \* PRECISION 0
- \* SCALE 0

*Hide Field PARNO ▲*

FIELD TOTVAL ►

- \* ALIAS TOTVAL
- \* DATA TYPE Integer
- \* WIDTH 10
- \* PRECISION 10
- \* SCALE 0

*Hide Field TOTVAL ▲*

FIELD ALTPARNO ►

- \* ALIAS ALTPARNO
- \* DATA TYPE String
- \* WIDTH 24
- \* PRECISION 0
- \* SCALE 0

*Hide Field ALTPARNO ▲*

FIELD OWNNAME ►

- \* ALIAS OWNNAME
- \* DATA TYPE String
- \* WIDTH 50
- \* PRECISION 0
- \* SCALE 0

*Hide Field OWNNAME ▲*

FIELD MAILADD1 ►

- \* ALIAS MAILADD1
- \* DATA TYPE String
- \* WIDTH 35

- \* PRECISION 0
- \* SCALE 0

*Hide Field MAILADD1 ▲*

FIELD INSIDE\_Y ►

- \* ALIAS INSIDE\_Y
- \* DATA TYPE Double
- \* WIDTH 19
- \* PRECISION 0
- \* SCALE 0

*Hide Field INSIDE\_Y ▲*

FIELD PLATDATE ►

- \* ALIAS PLATDATE
- \* DATA TYPE Date
- \* WIDTH 8
- \* PRECISION 0
- \* SCALE 0

*Hide Field PLATDATE ▲*

FIELD TAXMAP ►

- \* ALIAS TAXMAP
- \* DATA TYPE String
- \* WIDTH 10
- \* PRECISION 0
- \* SCALE 0

*Hide Field TAXMAP ▲*

FIELD IMPVAL1 ►

- \* ALIAS IMPVAL1
- \* DATA TYPE Integer
- \* WIDTH 10
- \* PRECISION 10
- \* SCALE 0

*Hide Field IMPVAL1 ▲*

FIELD UNCULT\_AC1 ►

- \* ALIAS UNCULT\_AC1
- \* DATA TYPE Single
- \* WIDTH 13

- \* PRECISION 0
- \* SCALE 0

*Hide Field UNCULT\_AC1 ▲*

FIELD CULT\_AC1 ►

- \* ALIAS CULT\_AC1
- \* DATA TYPE Single
- \* WIDTH 13
- \* PRECISION 0
- \* SCALE 0

*Hide Field CULT\_AC1 ▲*

FIELD CNTYNAME ►

- \* ALIAS CNTYNAME
- \* DATA TYPE String
- \* WIDTH 15
- \* PRECISION 0
- \* SCALE 0

*Hide Field CNTYNAME ▲*

FIELD TAXSTATUS ►

- \* ALIAS TAXSTATUS
- \* DATA TYPE String
- \* WIDTH 15
- \* PRECISION 0
- \* SCALE 0

*Hide Field TAXSTATUS ▲*

FIELD SZIP ►

- \* ALIAS SZIP
- \* DATA TYPE String
- \* WIDTH 9
- \* PRECISION 0
- \* SCALE 0

*Hide Field SZIP ▲*

*Hide Details for object FORREST\_PARCELS ▲*

*Hide Fields ▲*



## Metadata Details ▶

METADATA LANGUAGE English (UNITED STATES)  
METADATA CHARACTER SET utf8 - 8 bit UCS Transfer Format

SCOPE OF THE DATA DESCRIBED BY THE METADATA dataset  
SCOPE NAME \* dataset

\* LAST UPDATE 2023-08-09

### ARCGIS METADATA PROPERTIES

METADATA FORMAT ArcGIS 1.0  
STANDARD OR PROFILE USED TO EDIT METADATA FGDC

CREATED IN ARCGIS FOR THE ITEM 2022-10-31 15:27:25  
LAST MODIFIED IN ARCGIS FOR THE ITEM 2023-08-09 22:06:41

### AUTOMATIC UPDATES

HAVE BEEN PERFORMED Yes  
LAST UPDATE 2023-08-09 22:06:41

[Hide Metadata Details ▲](#)

## Metadata Contacts ▶

### METADATA CONTACT

INDIVIDUAL'S NAME Aaron Hosford  
ORGANIZATION'S NAME Tristate Consulting  
CONTACT'S POSITION GIS Analyst  
CONTACT'S ROLE point of contact

### CONTACT INFORMATION ▶

PHONE  
VOICE 205-338-1060

### ADDRESS

TYPE physical  
DELIVERY POINT 1019 Forrest Ave  
CITY Gadsden  
ADMINISTRATIVE AREA AL  
POSTAL CODE 35901  
COUNTRY US  
E-MAIL ADDRESS aaron@tristateconsulting.com

[Hide Contact information ▲](#)

[Hide Metadata Contacts ▲](#)

## Metadata Maintenance ▶

### MAINTENANCE

UPDATE FREQUENCY annually

[Hide Metadata Maintenance ▲](#)

## Thumbnail and Enclosures ►

THUMBNAIL

THUMBNAIL TYPE   JPG

[Hide Thumbnail and Enclosures ▲](#)

## FGDC Metadata (read-only) ▼

DETAILED DESCRIPTION

ENTITY TYPE

ENTITY TYPE LABEL   FORREST\_PARCELS

ATTRIBUTE

ATTRIBUTE LABEL   FID

ATTRIBUTE DEFINITION

Internal feature number.

ATTRIBUTE DEFINITION SOURCE   Esri

ATTRIBUTE DOMAIN VALUES

UNREPRESENTABLE DOMAIN

Sequential unique whole numbers that are automatically generated.

ATTRIBUTE

ATTRIBUTE LABEL   STNAME

ATTRIBUTE

ATTRIBUTE LABEL   PLATREF

ATTRIBUTE

ATTRIBUTE LABEL   Shape

ATTRIBUTE DEFINITION

Feature geometry.

ATTRIBUTE DEFINITION SOURCE   Esri

ATTRIBUTE DOMAIN VALUES

UNREPRESENTABLE DOMAIN

Coordinates defining the features.

ATTRIBUTE

ATTRIBUTE LABEL   SCITY

ATTRIBUTE

ATTRIBUTE LABEL   MCITY1

ATTRIBUTE

ATTRIBUTE LABEL   LATDEC

ATTRIBUTE

ATTRIBUTE LABEL   CULT\_AC2

ATTRIBUTE

ATTRIBUTE LABEL   CAMA

ATTRIBUTE

ATTRIBUTE LABEL   ZONING

ATTRIBUTE LABEL	MZIP2	ATTRIBUTE
ATTRIBUTE LABEL	DEEDREF	ATTRIBUTE
ATTRIBUTE LABEL	MZIP1	ATTRIBUTE
ATTRIBUTE LABEL	PPIN	ATTRIBUTE
ATTRIBUTE LABEL	RANGE	ATTRIBUTE
ATTRIBUTE LABEL	TAXYEAR	ATTRIBUTE
ATTRIBUTE LABEL	SUBNAME	ATTRIBUTE
ATTRIBUTE LABEL	TAXACRES	ATTRIBUTE
ATTRIBUTE LABEL	MSTATE1	ATTRIBUTE
ATTRIBUTE LABEL	TWSP	ATTRIBUTE
ATTRIBUTE LABEL	SUBDIVNO	ATTRIBUTE
ATTRIBUTE LABEL	GISACRES	ATTRIBUTE
ATTRIBUTE LABEL	STCNTYFIPS	ATTRIBUTE
ATTRIBUTE LABEL	MAILADD2	ATTRIBUTE
ATTRIBUTE LABEL	MSTATE2	ATTRIBUTE
ATTRIBUTE LABEL	TOTAL_AC	ATTRIBUTE
ATTRIBUTE LABEL	LONGDEC	ATTRIBUTE
ATTRIBUTE LABEL	MCITY2	ATTRIBUTE
ATTRIBUTE LABEL	SSTATE	ATTRIBUTE
		ATTRIBUTE

ATTRIBUTE LABEL	STFIPS	
ATTRIBUTE LABEL	LEGLDESC	ATTRIBUTE
ATTRIBUTE LABEL	INSIDE_X	ATTRIBUTE
ATTRIBUTE LABEL	UNCULT_AC2	ATTRIBUTE
ATTRIBUTE LABEL	LANDVAL	ATTRIBUTE
ATTRIBUTE LABEL	SECTION	ATTRIBUTE
ATTRIBUTE LABEL	CNTYFIPS	ATTRIBUTE
ATTRIBUTE LABEL	SITEADD	ATTRIBUTE
ATTRIBUTE LABEL	IMPVAL2	ATTRIBUTE
ATTRIBUTE LABEL	DEEDDATE	ATTRIBUTE
ATTRIBUTE LABEL	PARNO	ATTRIBUTE
ATTRIBUTE LABEL	TOTVAL	ATTRIBUTE
ATTRIBUTE LABEL	ALTPARNO	ATTRIBUTE
ATTRIBUTE LABEL	OWNNAME	ATTRIBUTE
ATTRIBUTE LABEL	MAILADD1	ATTRIBUTE
ATTRIBUTE LABEL	INSIDE_Y	ATTRIBUTE
ATTRIBUTE LABEL	PLATDATE	ATTRIBUTE
ATTRIBUTE LABEL	TAXMAP	ATTRIBUTE
ATTRIBUTE LABEL	IMPVAL1	ATTRIBUTE
ATTRIBUTE LABEL	UNCULT_AC1	ATTRIBUTE

ATTRIBUTE LABEL CULT\_AC1

ATTRIBUTE

ATTRIBUTE LABEL CNTYNAME

ATTRIBUTE

ATTRIBUTE LABEL TAXSTATUS

ATTRIB  
UTE

ATTRIBUTE LABEL SZIP

ATTRIB  
UTE

*Hide Entities and Attributes ▲*