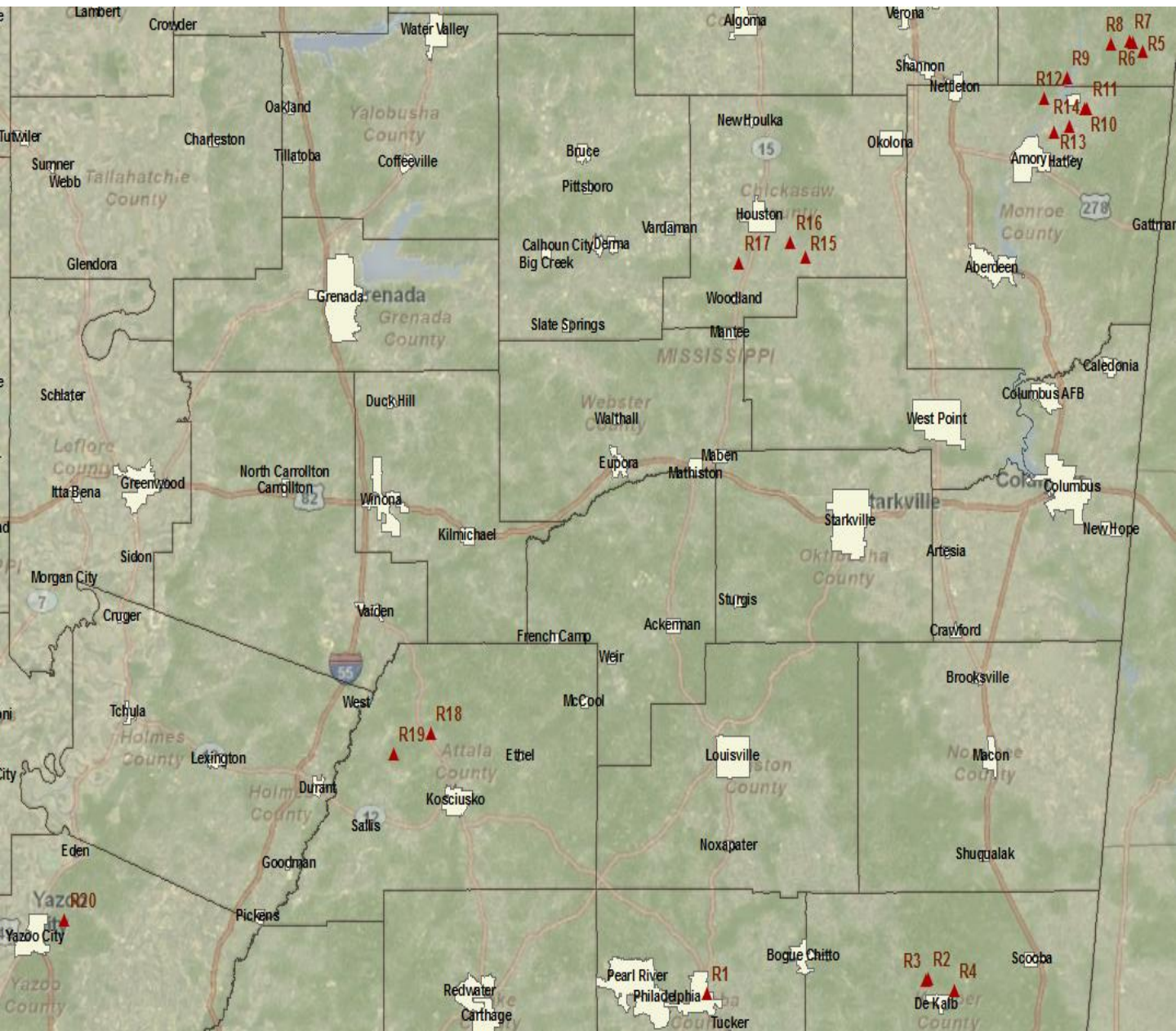


RC-26 Flight, 28 APRIL 2011





R-1

IVO Philadelphia, MS

DOI: 28APR11 / 14:24:16Z

LOOK AT GEO: 32 46.935 -89 6.276

UNCLASSIFIED

Damaged Softball Fields

HDTV MFOV Auto

DOE

SUCK-

GeoPnt

RE



Tlat N 32° 48.013' Tlon W 89° 6.462' Alt 387f S Rng: 2123m Ins Nav Hdg/Uncert=0.04
Lat: N 32° 46.935' Lon: W 89° 6.276' Az: -80.2° El: 10.7° 25-Apr-2011 14:24:16L

UNCLASSIFIED

RC-26 OPS
ANALYST / JHB



R-2

IVO DeKalb, MS

DOI: 28APR11 / 14:41:13Z

LOOK AT GEO: 32 48.113 -88 40.624

UNCLASSIFIED

Destroyed Home

HDTV MFOV Auto

DOE

SUCK-

GeoPnt

RE



Tlat N 32° 47.284' Tlon W 88° 41.269' Alt 328f S Rng: 1954m Ins Nav Hdg Uncert=0.04
Lat: N 32° 48.113' Lon: W 88° 40.624' Az: -51.9° tk: -5.1° 25-Apr-2011 14:41:13L

UNCLASSIFIED

RC-26 OPS
ANALYST / JHB



R-3

IVO DeKalb , MS

DOI: 28APR11 / 14:41:20Z

LOOK AT GEO: 32 48.035 -88 40.909

UNCLASSIFIED

Tornado Track

HDTV WFOV Auto

DOE

SUCK-

GeoPnt

RE



Tlat N 32° 47.273' Tlon W 88° 41.266' Alt 328f S Rng: 1663m Ins Nav HdgUncert=0.04

Lat: N 32° 48.035' Lon: W 88° 40.909'

Azi: -51.8° El: -25.3° 25-Apr-2011 14:41:20

UNCLASSIFIED

RC-26 OPS
ANALYST / JHB



R-4

IVO DeKalb, MS

DOI: 28APR11 / 14:52:11Z

LOOK AT GEO: 32 47.202 -88 37.56

UNCLASSIFIED

Tornado Track

HDTV WFOV Auto

DOE

SUCK-

GeoPnt

RE

PRF: Lat: N 32° 47.626' Lon: W 88° 38.417' Slant Range: 1735 m

10 240 W 300 330

LRF Armed



TLat N 32° 47.634' Tlon W 88° 38.450' Alt 272f S Rng: 1733m Ins Nav Hdg Uncert=0.05

Lat: N 32° 47.202' Lon: W 88° 37.560'

Az: -136.1° El: -20.3° 25-Apr-2011 14:52:11L

UNCLASSIFIED

RC-26 OPS
ANALYST / JHB



R-5

IVO Tremont, MS

DOI: 28APR11 / 15:27:47Z

LOOK AT GEO: 34 8.29 -88 15.726

UNCLASSIFIED

Destroyed Home

HDTV MFOV Auto

DOE

SUCK-

GeoPnt

RE

PRF: Lat: N 34° 8.290' Lon: W 88° 15.726' Slant Range: 2241 m



Tlat N 34° 8.277' Tlon W 88° 15.740' Alt 509f S Rng: 2214m Ins Nav HdgUncert=0.05

Lat: N 34° 8.070' Lon: W 88° 15.726'

Az: -120.2° El: -44.1° 25-Apr-2011 15:27:47L

UNCLASSIFIED

RC-26 OPS
ANALYST / JHB



R-6

UNCLASSIFIED

IVO Tremont, MS

DOI: 28APR11 / 15:28:06Z

LOOK AT GEO: 34 9.073 -88 16.8

Tornado Track

HDTV WFOV Auto

DOE

SUCK-

GeoPnt

RE

PRF: Lat: N 34° 8.086' Lon: W 88° 16.083' Slant Range: 2815 m

LRF Armed



TLat N 34° 8.088' Tlon W 88° 16.085' Alt 486f S Rng: 2806m Ins Nav HdgIncert=0.05

Lat: N 34° 9.073' Lon: W 88° 16.800'

Az: -134.5° El: -38.5° 25-Apr-2011 15:28:06Z

UNCLASSIFIED

RC-26 OPS
ANALYST / JHB



R-7

UNCLASSIFIED

IVOTremont, MS

DOI: 28APR11 / 15:28:16Z

LOOK AT GEO: 34 9.11 -88 17.238

Tornado Track

HDTV WFOV Auto

DOE

SUCK-

GeoPnt

RE

PRF: Lat: N 34° 7.959' Lon: W 88° 16.452' Slant Range: 3077 m

LRF Armed



Tlat N 34° 8.011' Tlon W 88° 16.353' Alt 505f S Rng: 3051m Ins Nav Hdg/Incert=0.06

Lat: N 34° 9.110' Lon: W 88° 17.238'

Az: -130.3° El: -31.2° 25-Apr-2011 15:28:16L

UNCLASSIFIED

RC-26 OPS
ANALYST / JHB



R-8

UNCLASSIFIED

IVO Tremont, MS

DOI: 28APR11 / 15:29Z

LOOK AT GEO: 34 8.838 -88 19.461

Tornado Track

HDTV WFOV Auto

DOE

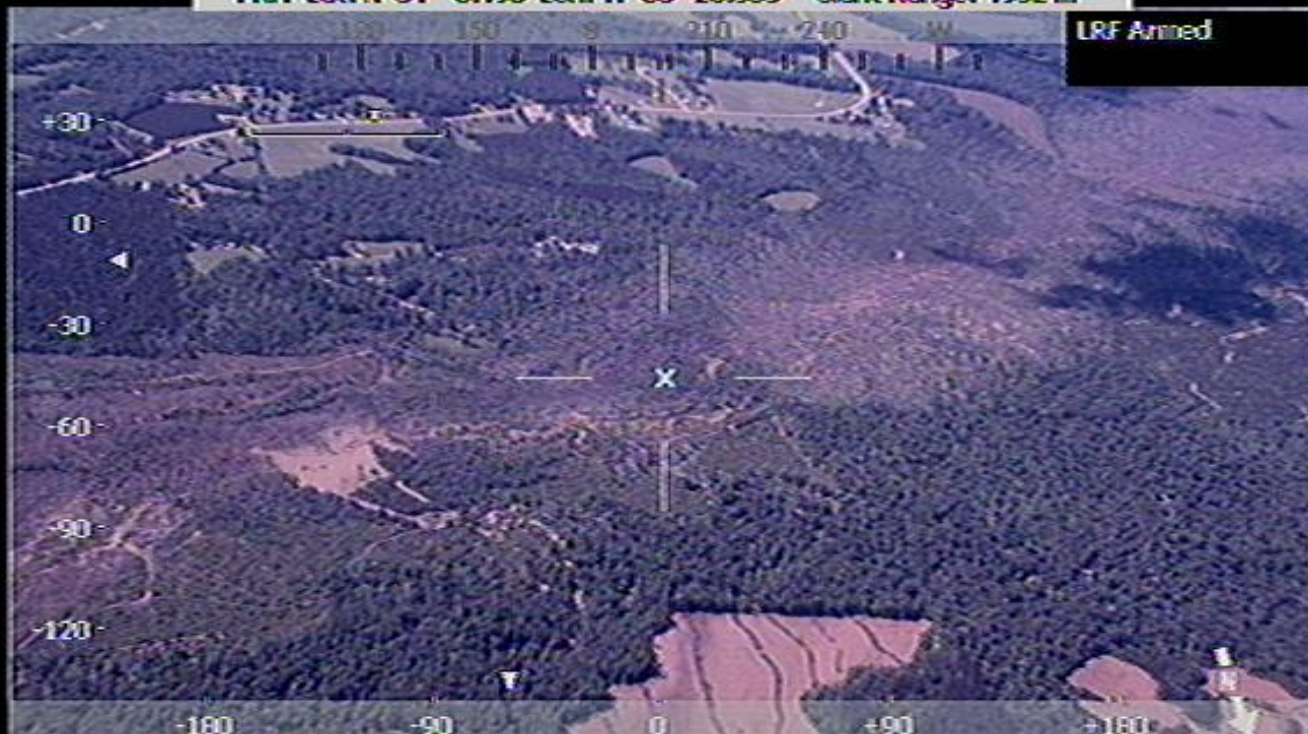
SUCK-

GeoPnt

RE

PRF: Lat: N 34° 6.496' Lon: W 88° 20.363' Slant Range: 4932 m

LRF Armed



TLat N 34° 6.506' TLon W 88° 20.330' Alt 249f S Rng: 4896m Ins Nav HdgUncert=0.06

Lat: N 34° 8.838' Lon: W 88° 19.461'

Az: -60.2° El: -11.0° 25-Apr-2011 15:29:03L

UNCLASSIFIED

RC-26 OPS
ANALYST / JHB



R-9

UNCLASSIFIED

IVO Smithville, MS

DOI: 28APR11 / 15:31:02Z

LOOK AT GEO: 34 6.005 -88 24.431

Damaged Athletic Fields

HDTV MFOV Auto

DOE

SUCK-

GeoPnt

RE

PRF: Lat: N 34° 4.549' Lon: W 88° 23.254' Slant Range: 3766 m

LRF Armed



TLat N 34° 4.534' Tlon W 88° 23.199' Alt 236f S Rng: 3824m Ins Nav Hdg/Uncert=0.08

Lat: N 34° 6.005' Lon: W 88° 24.431'

Az: -100.8° El: -27.7° 25-Apr-2011 15:31:02Z

UNCLASSIFIED

RC-26 OPS
ANALYST / JHB



R-10

UNCLASSIFIED

IVO Smithville, MS

DOI: 28APR11 / 15:32:48Z

LOOK AT GEO: 34 3.245 -88 22.464

Destroyed Home

HDTV NFOV Auto

DOE

SUCK-

GeoPnt

RE

PRF: Lat: N 34° 4.378' Lon: W 88° 23.460' Slant Range: 3219 m

LRF Armed



Tlat N 34° 4.379' Tlon W 88° 23.460' Alt 236f S Rng: 3222m Ins Nav Hdg/Uncert=0.06

Lat: N 34° 3.245' Lon: W 88° 22.464'

Az: -97.8° El: -23.7° 25-Apr-2011 15:32:48L

UNCLASSIFIED

RC-26 OPS
ANALYST / JHB



R-11

UNCLASSIFIED

IVO Smithville, MS

DOI: 28APR11 / 15:32:54Z

LOOK AT GEO: 34 3.355 -88 22.174

Destroyed Home

HDTV NFOV

Auto

DOE

SUCK-

DecPnt

RE

PRF: Lat: N 34° 4.398' Lon: W 88° 23.471' Slant Range: 3380 m

LRF Armed



Tlat N 34° 4.398' Tlon W 88° 23.472' Alt 236f S Rng: 3368m Ins Nav Hdg Uncert=0.06

Lat: N 34° 3.355' Lon: W 88° 22.174'

Az: -98.1° El: -21.4° 25-Apr-2011 15:32:54L

UNCLASSIFIED

RC-26 OPS
ANALYST / JHB



R-12

IVO Smithville, MS

DOI: 28APR11 / 15:36:01Z

LOOK AT GEO: 34 4.184 -88 27.089

UNCLASSIFIED

Destroyed Home

HDTV NFOV Auto

DOE

SICK-

GeoPnt

RE

PRF: Lat: N 34° 4.092' Lon: W 88° 24.073' Slant Range: 5128 m

LRF Armed



Tlat N 34° 4.092' Tlon W 88° 24.070' Alt 240f S Rng: 5026m Ins Nav Hdg/Uncert=0.08
Lat: N 34° 4.184' Lon: W 88° 27.089' Az: -156.6° El: -18.8° 25-Apr-2011 15:36:01L

UNCLASSIFIED

RC-26 OPS
ANALYST / JHB



R-13

UNCLASSIFIED

IVO Smithville, MS

DOI: 28APR11 / 15:37Z

LOOK AT GEO: 34 1.264 -88 25.963

Widespread Damage

HDTV MFOV Auto

DOE

SUCK-

GeoPnt

RE

PRF: Lat: N 34° 3.957' Lon: W 88° 24.325' Slant Range: 5844 m

LRF Armed



Tlat N 34° 3.907' Tlon W 88° 24.411' Alt 236f S Rng: 5765m Ins Nav Hdg Uncert=0.05

Lat: N 34° 1.264' Lon: W 88° 25.963'

Azi: -45.6° El: -9.7° 25-Apr-2011 15:37:34L

UNCLASSIFIED

RC-26 OPS
ANALYST / JHB



R-14

IVO Smithville, MS

DOI: 28APR11 / 15:38:07Z

LOOK AT GEO: 34 1.835 -88 24.273

UNCLASSIFIED

Destroyed Home

HDTV NFOV Auto

DOE

SUCK-

GeoPnt

RE

PRF: Lat: N 34° 3.724' Lon: W 88° 24.797' Slant Range: 4059 m



LRF Armed

+30
0
-30
-60
-90
-120

-180 -90 0 +90 +180

TLat N 34° 3.730' Tlon W 88° 24.794' Alt 253f S Rng: 4069m Ins Nav Hdg/Uncert=0.05
Lat: N 34° 1.835' Lon: W 88° 24.273' Az: -71.5° El: -29.4° 25-Apr-2011 15:38:07L

UNCLASSIFIED

RC-26 OPS
ANALYST / JHB



R-15

UNCLASSIFIED

IVO Houston, MS

DOI: 28APR11 / 15:51:33Z

LOOK AT GEO: 33 50.458 -88 54.845

Damaged Softball Fields

HDTV MFOV Auto

DOE

SUCK-

GeoPnt

RE

PRF: Lat: N 33° 50.999' Lon: W 88° 57.090' Slant Range: 4093 m



LRF Armed

Tlat N 33° 51.010' Tlon W 88° 57.097' Alt 312f S Rng: 4095m Ins Nav Hdg Uncert=0.05

Lat: N 33° 50.458' Lon: W 88° 54.845'

Az: -98.1° El: -14.5° 25-Apr-2011 15:51:33Z

UNCLASSIFIED

RC-26 OPS
ANALYST / JHB



R-16

IVO Houston, MS

DOI: 28APR11 / 15:52:39Z

LOOK AT GEO: 33 51.809 -88 56.61

UNCLASSIFIED

Destroyed Homes

HDTV MFOV Auto

DOE

SUCK-

GeoPnt

RE

PRF: Lat: N 33° 50.989' Lon: W 88° 57.081' Slant Range: 2542 m

LRF Armed



TLat N 33° 50.989' TLon W 88° 57.089' Alt 308f S Rng: 2545m Ins Nav HdgUncert=0.05

Lat: N 33° 51.809' Lon: W 88° 56.610'

Azi: -60.8° El: -49.5° 25-Apr-2011 15:52:39Z

UNCLASSIFIED

RC-26 OPS
ANALYST / JHB



R-17

UNCLASSIFIED

IVO Houston, MS

DOI: 28APR11 / 15:57:54Z

LOOK AT GEO: 33 49.958 -89 2.502

Destroyed Home

HDTV MFOV Auto

DOE

SUCK-

GeoPnt

RE

PRF: Lat: N 33° 49.559' Lon: W 89° 1.681' Slant Range: 2394 m

LRF Armed



TLat N 33° 49.560' TLon W 89° 1.683' Alt 322f S Rng: 2390m Ins Nav Hdg/Incert=0.04

Lat: N 33° 49.958' Lon: W 89° 2.502'

Az: -70.9° El: -36.8° 25-Apr-2011 15:57:54L

UNCLASSIFIED

RC-26 OPS
ANALYST / JHB



R-18

IVO Kosciusko, MS

DOI: 28APR11 / 16:21:23Z

LOOK AT GEO: 33 9.39 -89 38.276

UNCLASSIFIED

Tornado Track

HDTV MFOV Auto

DOE

SUCK-

GeoPnt

RE

PRF: Lat: N 33° 8.036' Lon: W 89° 40.879' Slant Range: 5049 m

LRF Armed



TLat N 33° 7.834' Tlon W 89° 41.489' Alt 413f S Rng: 6059m Ins Nav Hdg/Uncert=0.06

Lat: N 33° 9.390' Lon: W 89° 38.276'

Az: -32.4° El: -20.1° 25-Apr-2011 16:21:23L

UNCLASSIFIED

RC-26 OPS
ANALYST / JHB



R-19

UNCLASSIFIED

IVO Kosciusko, MS

DOI: 28APR11 / 16:25:20Z

LOOK AT GEO: 33 7.636 -89 42.512

Destroyed Homes

HDTV MFOV Auto

DOE

SUCK-

GeoPnt

RE

PRF: Lat: N 33° 7.049' Lon: W 89° 41.668' Slant Range: 2517 m

LRF Armed



Tlat N 33° 7.051' Tlon W 89° 41.671' Alt 417' S Rng: 2532m Ins Nav Hdg/Incert=0.05

Lat: N 33° 7.636' Lon: W 89° 42.512'

Az: -127.6° El: -46.3° 25-Apr-2011 16:25:20L

UNCLASSIFIED

RC-26 OPS
ANALYST / JHB



R-20

UNCLASSIFIED

IVO Yazoo City, MS

DOI: 28APR11 / 16:36:15Z

LOOK AT GEO: 32 53.183 -90 20.734

Destroyed Commercial Property

HDTV NFOV

Auto

DOE

SLECK-

GeoPnt

RE

PRF: Lat: N 32° 51.061' Lon: W 90° 24.979' Slant Range: 7952 m

LRF Armed



TLat N 32° 51.054' Tlon W 90° 24.989' Alt 98f S Rng: 7964m Ins Nav Hdg Uncert=0.16

Lat: N 32° 53.183' Lon: W 90° 20.734'

Az: -16.1° El: -16.5° 25-Apr-2011 16:36:15L

UNCLASSIFIED

RC-26 OPS
ANALYST / JHB